



HIGHGROVE HAPPENINGS



Dedicated to the improvement of our community through awareness and involvement in local issues

(FREE) Local News for the Highgrove Area

January 2017

Highgrove challenges for 2017

Housing:

Three years ago, 89 units of the Highgrove Blossom Apartments were completed, The Spring Mountain Ranch project will add 1,409 new homes where 300 new families are living, 36 new single family homes are under construction on the N/E at the corner of Spring St. and Garfield by the school, and 68 acres of townhouses, condominiums, apartments and a shopping center is being planned right in the middle of Highgrove where citrus groves used to flourish. The Riverside County General Plan also stipulates that high density housing is planned between Center St. and Spring St. on the east side of Mt. Vernon Ave. that would add 600 more apartments to Highgrove.

Services:

We have complained for years that Highgrove residents have to go to Grand Terrace to go grocery shopping. The money is going to another county instead of being spent in Riverside County. Hopefully the new owner of the Bixby property will provide a sufficient retail area so Highgrove will have a place for us to shop and spend our money.

Sewers:

As new development comes to Highgrove the need for more sewer connections will be necessary in order to accommodate new growth. The Norton Younglove Community Center and the Fire Station were allowed to connect to the sewer line along Main St. when they were built in 1996. The community center was dedicated on September 28, 1996 but unfortunately this special connection did not include any other residential or commercial connections.

Later, when the new library was built and dedicated in March of 2011 the library was connected to the sewer line that goes down Center St. westward toward the freeway. Since then other connections have been made by the Highgrove Blossom Apartments, Chevron Gas Station, the apartments across from the Highgrove Elementary School and most recently the 36 houses being built on the N/E corner of Spring St. and Garfield Avenue.

There is a more detailed plan that was made during Supervisor Ashley's jurisdiction that will eventually provide sewers to all of Highgrove but will be tied to future development. We did not want to be in-between Grand Terrace that has sewers and Riverside that also has sewers. All of the Spring Mountain Ranch homes are connected to the Riverside sewer system.

Roads:

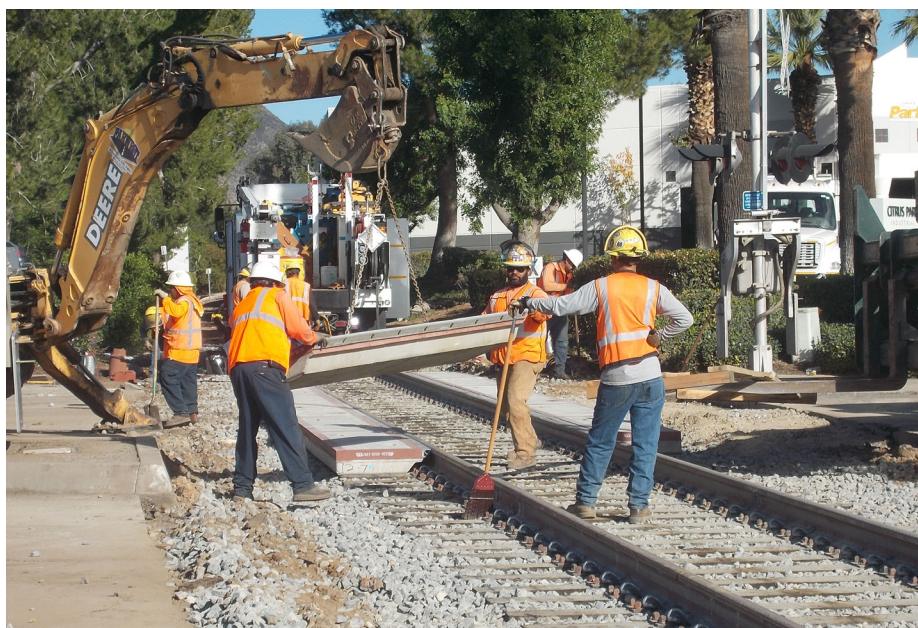
To accommodate all of this new growth new roads need to be added. Extending Michigan Ave. ½ mile southward across the empty field to Palmyrita Court would enable having a N/S road from Barton Road in Grand Terrace southward through Highgrove all the way to Columbia Ave. in Riverside.

And a westward extension of Spring St. is needed at Transit Ave. across the Perris Valley track and curve, on the property owned by RCTC to connect to Citrus St. at the base of the Iowa Ave. overpass. This would be a direct line westward from the Spring Mountain Ranch homes and within walking distance from the 68 acres planned on the former Bixby property.

When freight trains block Center St. and/or Main St., all vehicles including Fire trucks and Ambulances could go southward on Transit Ave. to get to the Iowa Ave. overpass via the westward extension of Spring Street. This would prevent Highgrove being cut off like it was when a train derailment closed both Main St. and Center St on August 26, 2006 for 18 hours and another derailment on May 16, 2006 that closed Center St. for 4 hours.

Remember, the residents of Spring Mountain Ranch cannot get out of their new neighborhood by going northward, eastward or southward. The only exit is westward toward Mt. Vernon Avenue. And it is only 1 mile westward down Spring St. from Mt. Vernon and Spring St. to RCTC's property at Highgrove where residents could park their car and go to San Bernardino where other Metrolink trains go to Los Angeles. Or if families want to go to in the opposite direction to San Clemente or Oceanside, they have the opportunity to go to the beach or they can catch a Coaster train at Oceanside that goes all the way to San Diego. There needs to be a plan to address the transportation needs of our community due to the availability of vacant land in Highgrove that is rapidly disappearing.

Iowa Ave. RR Crossing repaired



The rough railroad crossing on Iowa Ave. has been replaced with new pads and asphalt and is a great improvement to the Union Pacific railroad grade crossing. One year earlier on January 2016 we printed an article with a picture complaining about this rough railroad crossing.

Even though the right-of-way is still owned by the Union Pacific Railroad, this track gives access to businesses on the west side of Iowa Ave. that is now serviced by BNSF railroad train crews.

Trails:

The former Union Pacific railroad track has been abandoned and the railroad track has been removed from the I-215 freeway in Grand Terrace to Marlborough Ave. in Riverside by the new Marlborough Ave. Metrolink station. This would make an ideal trail from Grand Terrace, through Highgrove to Riverside.

Metrolink: Wrong Location????

Perris Valley Line ridership very disappointing!

The ridership on the new Perris Valley Line is so bad that RCTC has lowered the cost of tickets by 25% until June of 2017, which will be the first anniversary of the Perris Valley Line service. In our November 2016 issue we printed a photo of the Metrolink train stopped at Marlborough Ave. with a story about the boarding stats being disappointing. The new Metrolink station located at Marlborough Ave. (according to SCRRA the Southern California Regional Rail Authority which is known as

(Cont. on P. 4)

Surgery and Pneumonia delay January issue

On Dec. 16, 2016 Ardie had another surgery at Redlands Community Hospital that was supposed to be an hour and one half that turned into a 10 hour event by the time we returned home. She did not have to stay in the hospital overnight because our friend Tim Shelby is a registered nurse and he and I were going to take care of her after I brought her home.

Unfortunately about a week after Ardie's surgery, I went to another doctor in Redlands and the X-rays revealed that I had Pneumonia. We are both very glad that we had an RN on the property because Tim ended up having to take care of both of us!

During Ardie's time of trying to recuperate, all I could do was remain quiet to prevent me from getting severe coughing spells. There was no way I could have taken care of Ardie without the help from Tim who saw to it that we both received our medicine on time.

With both of us going through these set-backs shows that unless we get some local help we may not be able to continue the paper.

If you appreciate receiving your free local news at your residence or business, even the smallest offer of your assistance will be appreciated because we need people to write stories, take pictures, or sell advertising and give us a hand even if it is making phone calls.

We need your help now and no experience is necessary!

Call (951) 683 4994 or highgrovenews@roadrunner.com

I will continue to supply and edit the information received. (See P. 8)

HIGHGROVE HAPPENINGS



Highgrove Community Center Hours: Mon-Thur 8am-4pm; Fri 8am-2pm

Highgrove Community Park Hours: Dawn to Dusk

Contact: (951) 241-7221

THE NORTON YOUNGLOVE COMMUNITY CENTER

459 Center Street- Highgrove web site: www.nycchighgrove.com



Family Service Association

Program Coordinator

Leila Santamaria

Clerical Volunteers

Priscilla Burton, Jack Aboytes,
Rosie Navarro and Cynthia Kupfer

Family Service Association's Mission is to provide quality human services, child development, housing and senior services to residents of the Inland Empire and Desert Communities.



Hello Community Members,

January 1



Center closed

fresh new year

Another fresh new year is here...
Another year to live!
To banish worry, doubt, and fear,
To love and laugh and give!

This bright new year is given me
To live each day with zest...
To daily grow and try to be
My highest and my best!

I have the opportunity
Once more to right some wrongs,
To pray for peace, to plant a tree,
And sing more joyful songs!

William Arthur Ward, 1921-1994
American Author and Poet
www.VeryBestQuotes.com

County Regional Medical Center Mobile Health Clinic is back ! 9AM - 2PM January 6th & 20th: RCRMC will be here to answer your personal health questions and provide baselines assessment which include Health screenings (blood pressure /Diabetes-blood sugar screenings,) sick child visits. These health care services are being offered free as a community service to assist families, especially those who do not have, or who have recently lost, their health insurance.

January 6th & 20th 8 AM - 10AM: Resource table hosted by Mini Medical School at UCR.: A student-run community that serves the residents of the Inland Empire by providing professionally approved medical and health-related information to those in community settings in order to help bridge health disparities.

Nutrition and Education Program: Nutrition Series to begin 10:15 AM hosted by RUHS- Public Health. Certificate of Completion awarded! Topics include Build a Healthy Plate, What's on a label, Shopping on a budget, Planning Healthy Meals and Rethink your Drink. Spanish class every other Thursday Beginning Jan 12. English class every other Thursday Beginning Jan 19. -o- cost program

January 16th : Center Closed

Martin Luther King, Jr. Day Observed

Save The Date : March 18, 2017 7AM - 12Noon



Vendors reserve your participation!
\$10 includes 2 spaces, 1 table and chair

2017

Norton Younglove Community Center
459 Center St. Highgrove, CA 92507
(951) 241-7221
951-779-3099 fax
@nycchighgrove

(951) 241-7221
951-779-3099 fax



Aerodance Exercise
Mon-Thurs 9am-10am
\$3.00/per class.



Tuesday Bingo

12:30 PM 4 card for \$3
Includes refreshments

Sewing Class \$7.50
per class Wed 10:30-1:30. Note*2nd
Wednesday of the
month @ 11:30- 2:30.
Call Sandra 951-616-7787 for project materials info and clothing alteration services.

3-D Gelatin Molding Class 5 students
minimum sign up to
schedule classes. \$15
class/10 class course.

Polynesian Dance Class

Mon 7:15 pm. Wed 10 am Sponsored by
Regal Medical Group
\$0 COST for Regal
Med Members \$2 for
non Regal members .
Wed & Fri 6:30-7:30pm \$3 per class or
\$8 per week

The Art of Cake Decorating Baking

Intensive course/25
classes. \$15 per class.
Info: Call Marivel 951-275-6815 . 5 students

minimum sign up to
schedule course Certificate Completion
awarded

CIZE LIVE Hip Hop Class

Wednesday 7:30 PM
\$5 per class

E-Taekwondo Unit-ed

(Taekwondo Class)
Mon 5 50 PM & Thurs.
6pm For details
please call Master
Elvis Chavez 909-578-4798
etkdumc@yahoo.com
or www.etkdu.com

Square & Line Dance

Tue 6:30pm \$6 donation.
Info: 909-823-0294 or 951-788-4245
www.riversidesinglessingers.com

Zion Assembly Church of God

Sunday 11:00 AM. For
more info call Pastor
Pete Sarry 951-237-2337

Sr. Nutrition Lunch Program

Mon - Fri @11:30 AM
\$3 suggested donation

Whether you are having a wedding, birthday, anniversary, company or church event; our banquet hall is the place for you. Room capacity is 150 people at a rate of \$100 per hour (Kitchen available for additional flat rate cost). Security needed with all rental event (additional cost). To reserve your party's date a \$200 non-refundable deposit is required. For further details contact center at 951 241-7221

Daily lunch for ages 60 and over The Center offers a daily lunch for people 60 and over. It's a great way to meet new people and get familiar with our center and all the services we offer. Delicious meals are served Mondays through Fridays, from 11:30 a.m. to 12:30 p.m.

Child Development Center
Has Openings!!

Free or low cost Early Care and Preschool Programs
call 951-342-3151.

Monday thru Thursday 8AM to 4PM
Friday 8AM to 2PM

HOURS OF OPERATION

HIGHGROVE HAPPENINGS



CHP HONORED WITH APPEARANCE IN ROSE PARADE

SACRAMENTO, Calif. – On Monday, January 2, 2017, the world watched as the California Highway Patrol's (CHP) Mounted Patrol Unit marched proudly along the 2017 Pasadena Tournament of Roses parade route. The CHP's equestrian unit was one of 25 teams that were selected to participate in this year's celebration from among the hundreds of applicants.

"The CHP is honored and excited to be a part of an event many of us grew up watching every New Year," said CHP Commissioner Joe Farrow. "The parade, much like the CHP, has a very rich history full of tradition and pride."

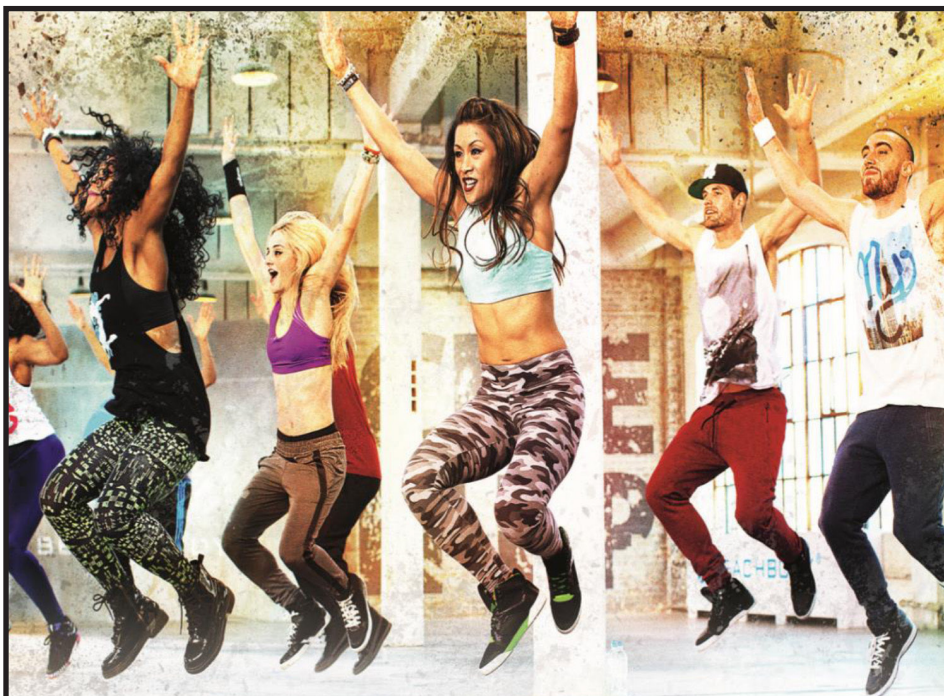
This year marks the 87th anniversary of the CHP and the 30th anniversary of the Department's Mounted Patrol Unit. The CHP's equestrian team is assigned to the Capitol Protection Section and consists of seven riders and six draft horses. On Wednesday, December 28, 2016, the riders and their horses made the journey from Sacramento to Pasadena to be a part of the more than 100-year-old tradition, which includes flower-covered floats, marching bands, and equestrian units from across the country.

Other notable appearances for the CHP's Mounted Patrol Unit include the San Francisco St. Patrick's Day Parade, Hollywood Christmas Parade, Los Angeles Kingdom Day Parade, Lake Tahoe 4th of July celebration, University of California Equestrian Days, and both the Coarsegold and Red Bluff Round-Up Rodeos.

The CHP's mounted patrol officers are responsible for the State Capitol and Capitol Park, as well as hundreds of state properties in downtown Sacramento. The Mounted Patrol Unit is used for general patrol and other situations, and is always ready to deploy at a moment's notice.

The mission of the CHP is to provide the highest level of Safety, Service and Security.

Steve Carapia
Public Information Officer
California Highway Patrol
Riverside Area
8118 Lincoln Ave
Riverside, CA 92504
Office: (951) 637-8000
Fax: (951) 637-8003



SIMPLE MOVES. SERIOUS SWEAT.

Ready to take the work out of your workout? Whether you want to learn a hot new dance routine or simply move to the beat of the music, CIZE® LIVE will have you burnin' up the dance floor—and burning off the calories. From your very first class, you'll feel the beat and contagious energy, and you'll sweat as you learn the hottest dance routines step-by-step! It's so fun, so addicting, you'll forget you are getting an amazing total-body cardio workout. **READY TO CIZE IT UP?**

Where: Norton Younglove Community Center
459 Center Street, Highgrove CA 92507
When: Wednesday Evenings at 7:30 PM

cize
LIVE!

©2016 Beachbody, LLC. All rights reserved. Beachbody, LLC is the owner of the CIZE trademark.

HIGHGROVE SHERIFF REPORT

Greetings, once again Highgrove is doing well when it comes to crime. As a community, Highgrove has seen decreases in burglary, auto theft, and larceny over last year, going against the trend being experienced in many parts of the state and county. There were 12 reported part 1 crimes during this rating period of 11/15/16 to 12/12/16; 1 assault, 3 burglaries, 3 auto thefts, and 5 larceny thefts. With the holidays came additional deployments of deputies in Highgrove to deter criminal activity. However, to keep those numbers low, the Riverside County Sheriff's Department encourages people to take reasonable care to protect

their property. Theft is usually a crime of opportunity. Individuals who are inclined to take your property are usually looking to make a quick, easy, score. Therefore, taking valuables inside, locking vehicle parked in the driveway or on the street, and having your property well-lit will discourage persons from stealing. As always, if you experience a theft, or in any way in the Riverside County Sheriff's department, please call.

We are here to help!



Sheriff Dept.: (951) 776-1099 X 5 (Non emergency)

Capt. Jason B. Horton (951) 955 2600

Lieutenant Don Sharp (951) 955 2629

Hot line tips for Highgrove area: (951) 955-2600

Sanctuary Cities:

"To Protect and to Serve"

But who are they protecting and who are they serving?

This motto appears on the sides of many police cars but listening to the various Police Chief's, Mayors and Governors around the country it makes me wonder who are they protecting and who are they serving?

Sanctuary cities are in many major cities in America that allow criminals to have a safe haven from those who would pursue them for crimes they have committed or for those who want to be protected from being arrested. There has been a lot of coverage recently about Sanctuary cities with Police Chiefs, Mayors and Governors stating that their city or police forces will not turn over criminals to other authorities such as the INS or other Federal agencies.

I may be wrong but I always thought that Federal laws supercede State or local laws but that does not seem to apply any more. One example that comes to mind is the drug enforcement laws. On one hand the Federal laws say certain drug possessions or abuses are illegal while on the other hand States are passing laws that permit incidents that are supposed to be violations of the Federal laws.

Does the phrase: **"To protect and to Serve"** apply to the victims of crime who call the police for protection or does it apply to the criminals who are running from the Law?

*"to protect
and to serve"*

Door of Police car

Sparkling Clean Car Wash Inc.

We Accept All Major Credit Cards

7 DAYS A WEEK
8AM TO SUNSET

1340 E. Washington St., Colton, CA 92324
SPARKLINGCLEANCARWASH.WEBLY.COM
expresscarwashcolton@gmail.com

909-824-1597

ECO FRIENDLY

LAMMSCLOTH
FREE VACUUM
FREE DRY

HEADLIGHT SPECIAL
\$20

HAND WASH OFF RACK
AVAILABLE

VETERAN & SENIOR DISCOUNT
M-W

PREPAID PLANS
WASH BOOKS
Buy 10 washes & get 2 FREE

MONTHLY UNLIMITED
Wash passes start at \$20
Include wash & Free Self Vacuum

DETAIL
*WASH INCLUDED

- ✓ WAX
- ✓ BUFF
- ✓ CLAY
- ✓ STEAM CLEAN
- ✓ SHAMPOO

GIFT CERTIFICATES Available

EXTERIOR EXPRESS WASH
\$3

FULL SERVICE
EXTERIOR & INTERIOR
AVAILABLE

FULL SERVICE
with coupon
\$3⁰⁰ OFF

ANY DETAIL SERVICE
with coupon
\$20⁰⁰ OFF

Across from FIESTA VILLAGE
Behind GEORGE BURGER

215 E Washington St.

Sparkling Clean Car Wash Inc.

HIGHGROVE HAPPENINGS

Metrolink continued from page 1

Metrolink) only had 22 boardings in all of July, only 23 boardings in August and only 16 in September. This means that during this 3 months period there were only 61 boardings at the Marlborough Ave. station.

Then on Nov. 20, 2016 and Dec.10, 2016 the Press Enterprise also printed articles about the lack of ridership on the new Perris Valley Line that opened last June. And according to the article in the Press Enterprise, RCTC has agreed to pay for the discount promotion.



Where are the 4,350 riders daily?

On Dec. 11, 2015 there was a large celebration at the Perris Depot that was a ribbon cutting ceremony but Metrolink service did not start until six months later on June 6, 2016. Ten days later, on June 16, 2016 at the Marlborough Ave. Metrolink station, RCTC celebrated the completion of the Metrolink service on the Perris Valley Line. but it was not well attended as shown by the photo above!

Here is a statement from RCTC's website:

"Enhanced Air Quality":

"Metrolink, combined with regional and local bus services, provides an environmentally-friendly and energy efficient alternative to driving alone. It is estimated that the PVL will attract **4,350 riders daily** serving commuters from Temecula, Murrieta, Menifee, Perris, Moreno Valley, Hemet and San Jacinto. This will help improve the overall quality of life for Riverside County".

And speaking of Air Quality, there have been over 33,852 Metrolink trains that have passed through Highgrove on the IEOC Metrolink Line without stopping since July 15, 2006. This figure does not include any previous 5 day a week Metrolink trains between 2001 and 2006. (Source: page 4 of the Sept. 2016 issue of the Highgrove Happenings titled: **"Is RCTC's opposition to building a Metrolink station on their property contributing to Air Pollution?"** And another article on the same page titled: "Air quality ignored for 15 years that ask the Southern California Air Quality Management District (SCAQMD) two questions: How many vehicles would you estimate would have been taken off the road since 2006 by 33,852 Metrolink commuter trains that have gone between Riverside and San Bernardino Counties on the IEOC Line, and how many tons of Air Pollution would have been eliminated if the Highgrove Metrolink station were built 15 years ago? No answer has been received.

Compromise rejected!

In the Dec. 2012 issue of the Highgrove Happenings I printed this statement in reference to a meeting I had with RCTC's Executive Director almost 6 years ago:

"On Feb. 7, 2011 a compromise was offered to Ann Mayer, Executive Director of RCTC for future Metrolink trains using the Perris Valley Line to not stop at Highgrove at all, in exchange for building a station at Highgrove. Cancelling the Marlborough Ave. station would have saved \$8,125,000.00 and reduced the travel time between Riverside and Moreno Valley. The compromise was rejected."

The new Marlborough Ave. station is only one mile south of RCTC's property at Highgrove but Highgrove is where the people from both counties have wanted a Metrolink station for the last 15 years on RCTC's excess property they do not need.

Marlborough Avenue's Destinations:

Part of the problem for the lack of ridership is the fact that commuters who board the train at the new Marlborough Ave. station, or anywhere else on the new Perris Valley Line, cannot get to San Bernardino County where there are other connections into Los Angeles because the route on the Perris Valley Line only goes to Perris in one direction and Riverside in the other direction with Los Angeles as it's final destination. But the existing daily trains through Highgrove that go to San Bernardino would provide connections at the San Bernardino depot where there are other Metrolink trains that also go into Los Angeles over the San Bernardino Line.

Different Destinations:

Over 2 years ago, on Oct. 24, 2014 Congressman Mark Takano and three of his staff came to Highgrove and I took them to both Metrolink locations. After the tour, Congressman Takano stated: **"The Highgrove location should be in addition to not instead of because both locations are needed!"**

RCTC owns the Marlborough Ave. property and the property at Highgrove. These 2 locations are only one mile apart but these 2 locations have different destinations! All that is needed is a parking lot on RCTC's property at their Highgrove location so commuters can use these 7 day a week Metrolink trains in both directions between the 2 counties!

Metrolink Costs:

I also have written documentation to show how much RCTC spent to purchase the property at Highgrove and how much was spent for the property at Marlborough Ave. where the new station is located. Many of you know that for 15 years this agency, that has the political jurisdiction at this location, has overruled the will of the people from both sides of the county line and State Senators from both sides of the county line. Copies of the Senator's letters of support are also shown on our web site to show that this location has regional support.

Here is another example of the truth when I say that RCTC only charged 38% of the cost they paid for the Highgrove location to the construction of the Perris Valley Line in order to try and stay under the \$250 million dollar limit that was the maximum limit for the entire PVL project under the Federal Small Starts program. The Perris Valley Line project included State and Federal funds.


RCTC moved 62% of the \$8,625,000.00 they paid for the Highgrove property (which is \$5,347,500.00) into the Measure "A" column which are funds for local transportation which they now have complete control of because they are the transportation agency in Riverside County which includes Highgrove. RCTC only needed 38% of the property for the width of the curved track to connect the Perris Valley Line to the BNSF main line at Highgrove which amounts to \$3,277,500.00. The remaining 62 % or \$5,347,500.00 that they do not need, they labeled "an uneconomic remnant". But their "uneconomic remnant" is the SAME EXACT LOCATION OF VACANT LAND that is needed for a parking lot at their Highgrove location on the inside and outside of the curved track. Here is how it looks on paper:

38%	of \$8,625,000.00	is \$3,277,500.00	charged to PVL
62 %	of \$8,625,000.00	is \$5,347,500.00	uneconomic remnant
	Total cost:	\$8,625,000.00	cost of Highgrove

Here is a copy of that letter:

This letter can also be seen by going to: www.highgrovehappenings.net,

Turn to P. 8 for RCTC letter




MY BARBER SHOP

Where men walk in and gentlemen walk out!

All types of Haircuts:

- Fades
- Tapers
- Mohawks / Fohawks
- Flat Tops / Crew Cuts
- Razor Finish



982 B Center Street ♦ Highgrove Ca 92507 ♦ (951) 341 - 5916



IE ALARM SYSTEMS

FIRE - INTRUSION - ACCESS CONTROL - CLOSED CIRCUIT TV

Richard Jimenez
General Manager
richard@IEalarm.com

IE Alarm Systems
1175 Center Street
Riverside, CA 92507
www.IEalarm.com
Lic #ACO4343 • CL#670389

Direct: 951.367.0762
Cell: 909.208.7997
Office: 951.686.2029
Central: 866.703.2896
Fax: 951.686.6318

Bauman's Tow Service, Inc.

Family Owned, Serving Since 1907
Ronnie & Gary Bauman



951-683-8060
FAX 951-369-3932

1944 Spruce St.
Riverside, CA 92507

HIGHGROVE HAPPENINGS

27 Questions submitted to Riverside County about parcel fees. Answers due Jan 18, 2017.

Riverside County Supervisor John Tavaglione
Nov. 16, 2016
Supervisor Tavaglione,

Attached is a list of 27 questions from the Highgrove MAC and the Highgrove parcel owners about the annual \$120.00 assessment that was implemented in 1992 and re-affirmed in 1997 for a Deputy Sheriff that was assigned exclusively to the east side of CSA 126 in Highgrove, and Park & Recreation services and improvements.

Please direct the questions to the appropriate County agencies and see that the answers to these specific questions are provided no later than Jan. 18, 2017.

The answers can be submitted via e-mail to: highgrovenews@roadrunner.com or mailed to:

R. A. Barnett, 474 Prospect Ave., Highgrove, Ca. 92507
(951) 683 4994

Please list each answer separately to correspond with the numbered questions.

Thank you,

R. A. "Barney" Barnett

Chmn.: Highgrove Municipal Advisory Council

Questions that need answers from Riverside County about Highgrove Parcel fees:

1. When was the last day the designate Highgrove Deputy Sheriff was on duty?
2. How much was collected from the Highgrove property owners after the designated Highgrove Deputy Sheriffs position was eliminated?
3. Do you have a copy of the written agreement between the Riverside County Administration and the Riverside County Sheriff s Department about the designated Highgrove Deputy Sheriff?
4. A portion of the Impartial Analysis of measure "T" in 1997, written by Riverside County Council states: **"The tax will be retained in the CSA 126 fund to be used only for purposes of continuing Extended Sheriff and Park & Recreation services and improvements"**
Our records show the amount of the tax that was collected after the Extended Sheriffs position was eliminated on Dec. 30, 2009 was \$1,382,362.46.
Why did the CSA 126E fund only show a balance of \$164,962 on July 1, 2016?

5. If the special assessment collected \$120.00 from each parcel for 7 years after the Sheriff was eliminated, was any of this Special Assessment money given to the Sheriff Department that was used outside the boundaries of the east side of Highgrove's CSA 126 after the Deputy was gone?
6. On Feb. 18, 2015, CSA Administrator Bill Brown told the Highgrove Municipal Advisory Council that the property owners in the new Spring Mountain Ranch homes do not have to pay the special \$120.00 annual parcel assessment. Are the Spring Mountain Ranch property owners now paying the \$120.00 annual Fee?
7. If Spring Mountain Ranch property owners are now paying the special assessment of \$120.00 and there is no designated Highgrove Sheriff, does any of the Spring Mountain Ranch money go into a **"fund to be used only**

Sheriff and Park & Recreation services and improvements" for purposes of continuing Extended Sheriff, and Park & Recreation services and improvements"?

8. If the Spring Mountain Ranch property owners are now paying the annual \$120.00 assessment, how much of the money collected from Spring Mountain Ranch is going for Extended Sheriff?

9. Is any of the money collected from the parcel assessment being used for Park and Recreation services and improvements or landscaping in Spring Mountain Ranch?

10. In 1991 the distribution of the \$10.00 per month assessment was decided and specified that \$7.96 would go toward Sheriff protection and \$2.04 would go to Park and Recreation. How much of the CSA 126E funds are currently designated to be used for "Sheriff" protection and how much is designated for "Park & Recreation services and improvements"?

11. Who authorized changing the name of our special assessment on our tax bills from CSA 126E to CSA 126 PARK & REC LNDSCPE then changed it again to just CSA 126?

12. Was Bill Brown the County Service Area Administrator on the day the Highgrove Sheriff was eliminated?

13. On May 9, 2009, were any CSA 126 funds used to pay for entertainment or food for Highgrove Day? How much was used and did Bill Brown authorize it?

14. Why weren't the voters notified prior to eliminating the designated Highgrove Sheriff?

15. Physical ballots were mailed out by Riverside County in 1992 and 1997 to the east side of Highgrove's CSA 126 parcel owners. Why wasn't another ballot mailed out to give voters other options such as reducing the amount of the Highgrove Deputy Sheriff's hours to stay within our budget, increase the annual fee, or eliminate the extra Sheriff's position entirely.

16. Were the plants or shrubs in the Highgrove Community Park replaced with drought resistant vegetation?

17. How many parcels are now paying the special assessment after the Sheriff was eliminated? Please list each year separately.

18. Please provide a list of names of property owners who paid the special assessment after the Sheriff was eliminated. Please list each year separately.

19. The report the MAC received on Oct. 19, 2016 states that on July 1, 2016 the balance for CSA 126E is **\$164,962** and the SMR balance is **\$543,649**. If all parcels are within the same area on the east side of CSA 126, is there one fund for the older part of Highgrove and another fund for Spring Mountain Ranch? Why are there 2 separate funds?

20. What is the amount of CSA 126E funds used to pay for **"PARK & Recreation services and improvements"**?

Cont. on P. 6



TACOS EL JR. #6
Open Daily 9-9
Family Restaurant
Serving Breakfast,

COCKTAILS
Margaritas,
Piña Colada, Daiquiri,
Wine

126 Iowa Ave., Highgrove (951) 683-5921

Highgrove e-mail address needed!

We are in the process of establishing better communication between Highgrove residents to keep everyone aware of what is happening in our community between the monthly publications of the Highgrove Happenings Newspaper. If you would like to send us your e-mail address we will add you to our list. Please indicate if you live on the east side or west side of the freeway and whether you are a property owner or renter. Send your e-mail address to: highgrovenews@roadrunner.com and we will keep you better informed. Thank you!



TUESDAY SPECIAL

25% off
entire check for local residents

Purchase of at least one beverage required.
Not valid with any other coupon.

22400 Barton Rd. Suite 1
Grand Terrace, CA 92313

909-783-3106


New Hours:
Monday-Saturday
7am-3pm
Sunday 8am-3pm
Close for dinner



(Where Fine Elegance Meets Old Fashioned Customer Service)

909-783-0143

22533 Barton Rd. ,Grand Terrace, CA 92313



Frank O. Tetley
Attorney at Law

(909) 872-0405 direct
(909) 872-0440 fax

22365 Barton Rd. Suite 206
Grand Terrace, CA



Bobbie Kay Forbes
(909) 783-8888

BobbieKay@BarnettHomes.net
BobbieKayForbes@gmail.com

22365 Barton Rd Suite #204
Grand Terrace, CA 92313

 **MLS**

HIGHGROVE HAPPENINGS

27 Questions Cont. from P. 5

RECREATION SERVICES AND IMPROVEMENTS” for each year starting in 2010 and ending on the fiscal year that ended June 30, 2016? Please list each year separately.

21. Does the current CSA designation on our latest tax bills mean that both sides are now paying the special assessment? Won't this latest designation cause confusion?

22. Will Riverside County refund the taxpayer's money that was collected after the Highgrove Sheriff's position was eliminated, or will legal action be necessary?

23. Will Riverside County provide a Deputy Sheriff assigned exclusively to the east side of CSA 126 for the next 7 years without taking any funds out of the CSA 126 account?

24. Has there ever been a FUND that shows how much of the parcel assessments was allocated for Extended Sheriff, and how much was designated for "Park & Recreation services and improvements"?

25. Was there ever a bookkeeping procedure put into place that separated the two different purposes for this assessment?

26. The 1997 ballot's "Impartial Analysis" by Riverside County Council stated: **"The tax cannot be increased except by a 2/3 vote of the electorate."** Was the electorate ever given the opportunity to vote on increasing the assessment?

27. The Highgrove Municipal Advisory Council is requesting a monthly financial report from Riverside County showing income and expenses for CSA 126

Additional questions:

From 2010 to 2016 what is the average annual cost of maintenance for the following:

Norton Younglove Community Center

Highgrove Community Park

Welcome to Highgrove sign and vegetation at northbound I 215 exit at Center Street

Maintenance of Iowa Ave. medians between Main St. and Spring Street.

Does the new vegetation in the Iowa Ave. medians require irrigation or are the plants plastic?

Since there is no MAC meeting in December, the answers to these questions will be provided at the Jan. 18, 2017 MAC meeting at the Library.

You Can Quote Me!

By: Dr. Cynthia Williams

Happy New Year! I'm so glad 2016 is over! It's certainly been a year for the record books; good, bad, historic, deplorable, uplifting and frightening. I'm looking forward to a new beginning; hence the new name of my column. Social media is covered in quotes from the thought provoking, the spiritually moving and then there's the absurd such as:

"The trouble with quotes on the Internet is that you can never know if they are genuine."

~ Abraham Lincoln

I will be sharing with you some quotes but I will do my best to ensure that they are stated accurately and attributed to the correct person.

I like calendars with the tear off pages. I flip the page over and make a list of what I want to get done, errands, ideas, people to see and places to go. It's an opportunity to think, assess and plan for tomorrow. After I finished my cancer treatment I knew I had been given a gift- a big gift of many more pages to tear off the calendar. I try not to waste them; I don't anyone to be wishing for my extra hours! Try to make your hours worth it. Use them to their fullest.

"Let our New Year's resolution be this: we will be there for one another as fellow members of humanity, in the finest sense of the word."

~ Goran Persson

Part of making your days worthwhile, in my experience, is thinking of others. Not everyone is able to use their hours to their fullest. Illness, disability, being overworked, poverty, and depression can reduce a person's ability to live their hours, live their lives in peace and happiness. Using part of your hours to help others is rewarding, fulfilling, and increases the value of your given hours. Find ways to help others. There are so many ways.

"Hope smiles from the threshold of the year to come, whispering, 'It will be happier.'"

~ Alfred Lord Tennyson

Maybe you are a person who isn't able to use your hours to the fullest. Hope can be hard to come by. Goals can be hard to set. Seeing a future without worry can be daunting. Hope comes from within. Start by setting small goals. Allow yourself a few minutes to dream, plan and hope. Take a few minutes each day to do something good for yourself. Close your eyes, breathe deep and stretch. Focus on the good in your life. Allow thankfulness to come into your heart and let it give you strength for the next day.

Happy New Year to everyone. I wish you health, happiness and prosperity.

Highgrove MAC meeting Jan 18, 2017

7:00 PM Highgrove Library, 530 Center St. Highgrove. Public invited! Bring a friend!

WASHBURN & SONS, INC.

Citrus Pest Control
ALAN A. WASHBURN
President

Citrus Specialist & Advisors

807 Center Street
Riverside, CA. 92507

Office: (951) 683-2392 Cell: (951) 316-6806
PCA 70942 QAL 98944

Tranquil Blossom Massage

Brandy Marion, CMT
CAMT Cert # 70275

Address: 22417 Barton Road
Suite A
Grand Terrace, CA 92313

Telephone: 909-314-7212

www.tranquillblossom.com



(909) 824-8224
Fax (909) 783-2429

Full Service Commercial Printing
Copying & Faxing Services
Graphic Design
Electronic Pre-Press

22310 Barton Road, Suite D • Grand Terrace, CA 92313
accent@accentprint.com



Bauman's Building Supply

3199 Kansas Ave.
Riverside, CA 92507
Phone: (951) 686-5732
Fax: (951) 686-5740



Gary Echito, Agent, Lic. #0423102

3239 Chicago Avenue
PO Box 5578, Riverside, CA 92517-5578
Bus 951.684.8450
Fax 951.684.8453
gary@garyechito.com

The greatest compliment you can give is a referral.

AMERICAN NAILS

Professional Nail Touch for:
Ladies & Gentlemen

HOURS

Mon/Sat 9 am - 7 pm
Sunday CLOSED

\$200 off
New set
of Gel Manicure

22488 Barton Rd.
Suite 102

Grand Terrace, CA

909-370-1704

ACURA
HONDA
LEXUS
NISSAN
INFINITY

TOY TECH

Auto Repair
Specializing In Toyota
(951)781-7633

983 Center St.
Highgrove, CA 92507

JAMES JAURIGUE
Certified Master Technician



HIGHGROVE HAPPENINGS

OBITUARIES



PHILIPP A. WASHBURN passed away peacefully at his home surrounded by his loving family on December 1, 2016. He was born on October 24, 1928 in Glendora, CA. At 6 months, he moved to Riverside, CA. Phil grew up in Riverside attending Bryant Elementary, Central Junior High where he met his future wife Doris and graduating from "old" Poly High School in 1946.

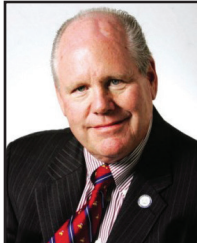
Phil attended Cal-Poly College Pomona before going to work in the family business with his father, Archie Washburn. Phil actually began working at Washburn & Sons when he was 14 years old. He managed the Washburn pest control operations for over 40 years. He also oversaw the Washburn citrus ranch operations.

Phil had a lifelong devotion to the citrus industry being the fourth-generation citrus farmer. He served on the California Pest Control Operators Board, Citrus Research Board, and Citrus State Park Board.

Phil met his wife Doris (McMahan) in Junior High. They were married on February 11, 1950 and spent the rest of their lives together raising a family, traveling, water skiing and summers at the family home in Laguna Beach. His passion was racing hot rods and his 1927 Model-T Roadster. Philipp was an active member and golfer at the Victoria Club. He was President of the Vikings Golf Club for 2 years.

Phil is survived by his loving wife Doris and their sons; Alan (Elizabeth), David (Lydia) and Dennis Washburn; five grandchildren; Donnell, Dion, Irene, Kyle and Jayme; seven great grandchildren and sister Donna Whitson.

PRESTON AND SIMONS MORTUARY,
Funeral Directors 951-683-7410



John Benoit

Riverside County Supervisor John Benoit

On Dec. 26, 2016, the day before Supervisor Benoit's 65th birthday, Supervisor Benoit lost his battle with pancreatic cancer.

Supervisor Benoit had a long history of public service that included many years with the California Highway Patrol. His district was the 4th District in the Coachella Valley area of Riverside County. He also was a member of the AQMD (Air Quality Management District) among many other accomplishments. Funeral services are scheduled for 10:00 am Jan. 10, 2017 at 47225 Washington St. in La Quinta.

Phil's Philosophy

By: Phil Turner

Is Older Better?

These days I find myself longing for "the good old days". On reflection, most of the music I listen to is from 40, 50 years ago or older. Does today's music compare to The Eagles, Led Zeppelin, or Elvis? There are entire genres of music I don't listen to. Today's Pop, R&B, and Rap are meaningless to me. I don't think Rap is even music. When I hear a car pull along side of me blasting that mess, I want to consider running the red light just to get away from them.

I can't imagine that today's cars will become classics. When I was a kid, we all kept our eyes peeled for the release of the new model year of cars. Today without nameplates, it's hard to distinguish a Chevy from a Toyota, or a Ford from a Nissan. Cars used to be distinctive. You could tell a Cadillac from a Lincoln, or a Ford from a Chevy, from across a parking lot.

Contemporary cars are made of plastic, and aluminum. Cars are much lighter, and seem to go many more miles without needing a rebuild. They have many more amenities, such as navigation, backup cameras, Bluetooth, and sound systems. You can buy them off the lot to go crazy fast. Having said that, do we believe that care of the last few decades will become collectable?

We used to trust Walter Cronkite, Huntley and Brinkley, The New York, and Los Angeles Times to deliver our news. Today the news is so biased, that we find ourselves watching it all with a jaundiced eye. I recall the movie "All the President's Men", where Woodward and Bernstein, agonized over getting several sources for their story. Having done so, they then had to take their findings to a very stern and meticulous editor before going to print. Is that quality of news gathering gone forever?

I can't recall seeing a really good movie in years. I used to look forward to the Academy Awards, and the Emmy Awards shows. Today I'm hard put to know who the actors are, or what they played in. The presenters seem to want to lay some lame political message on us.

I think I have 500 TV channels, or some such ridiculous number, and can't find anything to watch. Often I settle on reruns of Seinfeld.

There seem to be dozens of award shows today. I saw a teaser recently for an award show for animals. Hey I love animals, but come on!

I haven't read a truly great book in several years. I probably read two or three books a week. Although most are good, many authors today write a good novel, and then follow the same pattern for their subsequent writings. Same book, same character, different setting.

Were the good old days, really the good old days? Yea I think so!



BARBARA ELLEN BAUMAN

Barbara Ellen "Barbie" Bauman passed from this life on the morning of December 14th, 2016 at Riverside's Community Hospital. Born in St. Louis, Missouri, May 28th, 1943 to Howard and Margaret Kirk, Barbie graduated from San Bernardino's Pacific High School in 1961 and worked for Allstate Insurance Company where she was first introduced to Ronnie Bauman - her beloved partner in life who she married in 1969.

Apart from child-raising and later multi-tasking at the Bauman family business, Barbie excelled artistically at ceramics and easel painting. Barbie was a generous giver - particularly of love. She loved animals more than most, but she loved people most of all. With abounding motherly love, she was "Mom", even to kids other than her own.

Barbie's parents Howard and Margaret Kirk; brother Bill Kirk and first-born daughter Janet Barnes have preceded her in passing. Barbie is survived by her husband Ronnie Bauman and sister Suzette Willhite. She is also survived by her daughter Sherri Barnes, bonus-children Rodney and Diana Bauman who've also called her "Mom", granddaughter Tawny Cothran, grandson Rory Bauman and six-year-old great granddaughter Ruby Cothran, who've all called her "Grandma Barbie."

Funeral arrangements have been made through Acheson and Graham Garden of Prayer. Services for Barbie will be held on Saturday, January 7th, 2017 at 10:00 AM, with reception to follow at Canyon Crest Country Club.

Grand Terrace Smog

Big or Small we Smog 'em All!

FAST FRIENDLY SERVICE
NO HIDDEN FEES
OVER 20 YEARS
IN BUSINESS



Appointments & Walk-Ins Welcome

909

12210 Michigan St. Grand Terrace

*Mon-Fri: 8:30am-5:00pm

*Sat: 8:30am - 1pm

824-7664



Initial Smog Test

* Must present coupon
before test for discount
*Valid w/coupon only

*Not valid with any other offers



We accept Checks

Totally NAILS & SPA

1100 S. Mt. Vernon Ave. #F
Colton, CA 92624
(In Wal Mart shopping center)

(909) 825-5324

Mon. - Fri.: 9:30 am - 7:30 pm
Sat.: 9:30 am - 7:00 pm
Sun.: 10:30 am - 6:00 pm

TRI-CITY

SELF STORAGE
WWW.tricityselfstorage.com
485 W. La Cadena Dr. Riverside, CA 92501

951-784-0102

FUN!

JOIN US FOR OUR MONTHLY
COMMUNITY SALE!!
12-10-16



MUSIC!

STORAGE SPECIALS

LOW MONTHLY RATES, FREE MOVE IN TRUCK W/RENTAL, DISCOUNTED MERCHANDISE AVAILABLE, ON SITE SHREDDING, MONTHLY YARD SALES, SALVATION ARMY DROP-SITE, WIDE AISLES FOR EASY ACCESS, DRIVE UP/GROUND LEVEL UNITS, KNOWLEDGEABLE AND COURTEOUS STAFF, CLEAN AND SECURE PROPERTY.

FREE ADMISSION!!

Professionally Managed by TNT Self Storage Management
www.superspacestorage.com



SWAP!

CALL TODAY!!

TRADE!

SAVE!

1/2 OFF
ON SELECT SIZES.
NEW RENTALS ONLY

CALL TODAY AND
SECURE YOUR SPACE!
IN LIGHT OF OUR
ECONOMY
SPACES ARE AVAILABLE
AT NO COST!!!!
SO TELL YOUR
NEIGHBORS,
TELL YOUR CO-
WORKERS
AND COME ON OUT
AND JOIN US!
WE LOOK FORWARD TO
SEEING YOU!

- ❖ SELL YOUR USED/NEW HOUSEHOLD ITEMS, CLOTHES, TOYS, BOOKS, ELECTRONICS, AUTO PARTS, ETC.
- ❖ SELL YOUR HANDCRAFTED GOODS!
- ❖ PROMOTE YOUR SMALL BUSINESS!
- ❖ NON-PROFIT FREE SET UP

SAVE!

YARD SALE



Riverside County Transportation Commission

August 24, 2009

Ms. Melanie Robertson
Transportation Program Specialist
Federal Transit Administration
201 Mission Street, Suite 1650
San Francisco, CA 94105

Subject: Perris Valley Line Project – Citrus Connection Real Estate Issue
Request for Guidance

Dear Ms. Robertson:

On April 9, 2008, Riverside County Transportation Commission (RCTC) adopted the current Locally Preferred Alternative (LPA) that is on the Burlington Northern Santa Fe (BNSF) line at Citrus Avenue. The Perris Valley Line (PVL) will operate primarily on track used as a freight line known as the San Jacinto Branch Line (SJBL). RCTC needs to acquire rights for additional railroad right of way to connect the SJBL to the BNSF line and to the Downtown Riverside Metrolink station.

The property that is the subject of this request for guidance is necessary for that connection (Citrus Connection) under the LPA and identified as Assessor Parcel Numbers 247-106-006, 247-112-002, and 247-150-011 and consolidated for development as a result of a city of Riverside approved Lot Line Adjustment. A copy of the Lot Line Adjustment is attached as Exhibit A. The property is fully entitled and is approximately 17.23 acres of vacant land. On July 30, 2009, a Request for Concurrence in the National Environmental Policy Act (NEPA) Finding 23 CFR 771.117(d)(12), was sent to Mr. Leslie T. Rogers for protective acquisition of land for the PVL project.

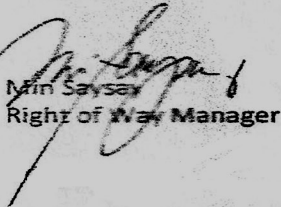
The portion of the property needed for the PVL project is approximately 6.6096 acres or 38% of the full parcel. A partial acquisition of the property is not feasible at this time for the following reasons: (a) Condition of Approval No. 23 on page 7 indicates that Villa Street may only be used as emergency access. A partial acquisition will leave the remainder of the property an uneconomic remnant. (A copy of Approval of Development Application by the city of Riverside Community Development Department is attached as Exhibit B); and (b) since this is an Advanced Acquisition for Protection, RCTC cannot exercise its power of eminent domain.

RCTC's intent is to make an offer to acquire the property and to use project funds to acquire the 6.6096 acres required to connect the SJBL to the BNSF line. The remaining 62% of the cost to acquire the property will be financed using RCTC Measure A funds (local funds) and held for RCTC's future use.

RCTC is requesting FTA's guidance in its plan to charge only the cost of the 38% portion of the parcel to the PVL project. RCTC's request is predicated on controlling project costs and to remain below the \$250 million New Starts threshold. RCTC will secure an appraisal of the property if it receives a response from FTA in the next two weeks.

Thank you for your consideration and assistance.

Sincerely,


Min Sayson
Right of Way Manager

But what happened? Highgrove and the surrounding residents in Riverside County and the cities of Grand Terrace, Loma Linda and Colton in San Bernardino County have been waiting for 15 years!

Now that the Perris Valley Line is completed and no one is riding the new Metrolink trains at Marlborough Ave., isn't it time for RCTC to listen to the voices and letters of the people and politicians, and encourage a partnership with SANBAG to build a parking lot on the RCTC property at Highgrove that is still vacant, that will benefit the region on both sides of the county line!

Please go to: www.highgrovehappenings.net, click on Metrolink, Supporting Docs, and Comments over the last 8 years.

Sheriff Coverage:

Highgrove property owners are still paying for a designated Highgrove Deputy that was eliminated several years ago without proper written notification to the parcel owners.

27 Questions have been submitted to Riverside County asking about Sheriff coverage in Highgrove and why property owners are still having to pay \$120.00 per year per parcel for a Sheriff Deputy that was assigned exclusively to the east side of Highgrove but was eliminated. This is another subject that has been addressed in the Highgrove Happenings Newspaper that all property owners should be concerned about. The 27 questions that were submitted to the county can be found on pages 5 and 6 of this issue of the Highgrove Happenings.

www.highgrovehappenings.net. The answers to these questions will be discussed at the next Highgrove Municipal Advisory Council meeting on Jan. 18, 2017 at the Highgrove library located at 530 Center St. in Highgrove. The meeting starts 7:00 pm and the public is invited.

Fake News? The challenge:

Names, dates and written documentation can be found on our web site to verify that the information we print is nothing but the truth!

Public Support:

I am not the only one who finds it hard to understand how a transportation agency, that includes commuter rail jurisdiction, can be so set against building a parking lot on their property that is right next to a track where existing daily Metrolink trains have operated every day of the week (including Sat. & Sun.) that have gone in both directions between the 2 counties since July 15, 2006 that would help relieve traffic congestion on our freeways.

For others who support the Highgrove location please go to: www.highgrovehappenings.net, click on Metrolink, Supporting Docs, and Comments over the last 8 years that was prepared almost 6 years ago on Jan. 14, 2010 and look at the dates on the letters that support Highgrove.

Reconsider Highgrove!

Almost 8 years ago, on Feb. 15, 2009 the Press Enterprise printed a statement from Ann Mayer, Executive Director of RCTC that said:

"We have to put the stops where they will serve the most people" (Continued top right)



*Happy Holidays,
From my home to your home.*
Your neighborhood Realtor.
What's your house worth?
Call today & find out.
Happy Trails!
Livia Earp

Cell: (951) 850-5508
Fax: (951) 870-4129 or
(909) 370-0936
Email: livearp@sbcglobal.net

Westcoast Realtors Inc.
DRE#00458583

Highgrove Library News



**FREE Wireless Internet Access at
Highgrove Library
530 Center St., Highgrove, CA
951-682-1507**

Highgrove Library is open on the following days,
Tuesday 10:00 am to 6:00 pm, Wednesday 10:00 am to 6:00 pm,
Thursday 10:00 am to 6:00 pm, Friday 12:00 pm to 6:00 pm,
Saturday 10:00 am to 3:00 pm, and closed on Monday and Sunday.

For more information please call 951-682-1507

HIGHGROVE HAPPENINGS



HIGHGROVE CHURCHES



Immanuel Baptist Temple

45 Michigan Ave., Highgrove 951-784-1100

Pastor John Pettit

Sunday School: 10:00 am
Church Service: 11:00 am & 6:00 pm
Bible Study: 7:00 pm Wednesdays

Christ the Redeemer Catholic Church

12745 Oriole Avenue at Pico Street, Grand Terrace, CA 92313

MASS SCHEDULE

Saturday Evening 5:00 PM Weekly Mon-Fri 8:00 AM
Sunday 8:00 AM & 10:00AM (English) 12PM: (Spanish)

E-mail: christthereedemergrt@sbdioocese.org

Jose Crespo: Pastoral Coordinator
Parish Office 909-783-3811 Fax 909-783-4689

Open hearts

Open minds



Open Doors

HIGHGROVE UNITED METHODIST CHURCH

938 Center St., Highgrove, CA 92507

Free Community Breakfast December 31, 2016

9:00-10:00 am Sunday Worship starts @ 10:45am



Rev. Jackeline A. Vives

"This church has been serving the Highgrove community since 1890"



sandals church
REAL WITH OURSELVES, GOD & OTHERS
SUNDAYS 9AM / 11AM / 5PM / 7PM

180 RILMYRITA AVE
RIVERSIDE CA, 92507
sandalschurch.com
[facebook.com/sandalschurch/](https://www.facebook.com/sandalschurch/)
twitter.com/sandalschurch



Sundays

10am

Wednesdays

6:30pm

refugefellowship.org

1600 Chicago Ave. Suite R7 Riverside,
CA 92507

Phone: (951) 680-0167

LIFE.
Sundays 9 & 11 am
Children's Ministry
Youth Ministry
ccthebrook.org
909.424.0010
Grand Terrace High School
21810 Main Street
Barton
Main
Center
Life now. Life eternal. JOHN 10:10
I have come that they may have life, and that they may have it more abundantly.



Zion Assembly Church of God

Sundays 11:00 am

Norton Younglove Community Center

459 Center St. Highgrove, Ca. 92507

Join us in learning the word of

God from the scriptures of the Holy Bible. All are welcome!

www.zacoghighgroveca.org (Se Habla Español)

For more information please call Pastor Pete Sarry at (951) 237 2337



ROBERT L. JUNG

D. D. S.

Family Dentistry * Cosmetic Dentistry * Laser Dentistry * Dental Implants * Conscious Sedation
Early morning and evening appointments available

909-925-7770 / 783-0080

22400 Barton Rd. Suite 8, Grand Terrace

Grand View Baptist Church

Pastor Lawrence Caraway

Service at 11:00am

(Across from the G.T. Senior Center)

For more info call 909 825-8224

22755 Vista Grande Way, Grand Terrace, CA 92313

Big & SMALL

"We Groom Em' All"



Free flea bath
1 per customer

By Appt. Please

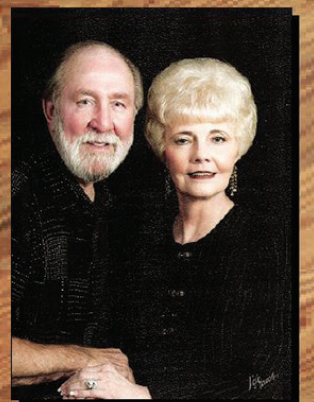
22400 Barton Rd, Ste. #5
Grand Terrace

909 783.2217

ALWAYS A FAIR PRICE



FAIR PRICE CARPETS HAS
BEEN SERVICING THE
ENTIRE SOUTHERN
CALIFORNIA AREA FOR
OVER 55 YEARS! WE
OFFER QUALITY PRODUCTS
AND HONEST, DEPENDABLE
CRAFTSMANSHIP. YOU WILL
ALWAYS FIND FAIR PRICED
CARPETS PROMPT AND
COURTEOUS.



THEN AND NOW

Carpet • Tile • Hardwood • Laminate • Vinyl • Natural Stone & Window Coverings
"We've Got Your Commercial/Residential Needs Covered"

Fair Price Carpets

Original Owners Don & Marlene Ritz Selling Flooring Since 1957



Se Habla Español
License #331756

(951) 684-8578

1070 Center Street • Riverside, CA
www.fairpricecarpets.com



Tuesday - Saturday
8:30AM - 5:30PM

HIGHGROVE HAPPENINGS

Advertising rates

The "Highgrove Happenings" advertising rates are the lowest rates in town. If you have already trained your dog to bring in the paper (like the one on the right) you can be assured that he won't be lifting anything too heavy by bringing in our little newspaper. Some of the other larger newspapers are wasting just too many trees, especially in their Sunday edition. No one should ever ask their dog to lift something that heavy! Our little paper has lots of local news and we take pride in providing you with something free of charge that will fit in the bottom of your birdcage! Give us a call (951) 683 4994 or check out our web site for pricing and sizes of our ads. Go to www.highgrovehappenings.net and click on the contact us page.



Call us !

We have no reporters so we are asking for your help. You can be a reporter by just giving us a call or sending us an E-mail or a picture. Small town news is what we are all about and we want to encourage you to participate. We try to print positive things since there is so much bad news on TV and in other newspapers. Send us a story, take a picture or call us about something that is happening in Highgrove. (951) 683 4994



Please visit our Highgrove Happenings website:

www.highgrovehappenings.net

Keep in touch: Send us your e-mail addresses to help us keep you informed of activities and projects that effect our community. Send your address to:

highgrovenews@roadrunner.com

Highgrove T-shirt prices reduced! (See P.3)

Notice: We have some Highgrove T-shirts in various sizes that have just been printed. They have the Highgrove logo on the front and a picture of a 1916 "Highgrove Brand" orange crate label showing Sugarloaf with an orange grove at it's base. It states: Grown and Packed in Highgrove by Sugarloaf Orange Growers Assn., Highgrove. Call (951) 683 4994

ADVERTISE YOUR BUSINESS WITH US!

Now accepting Credit Card Payments!

You will find that our rates are very reasonable and now for your convenience we are accepting **Credit Card Payments and Pay Pal!**

For our advertising rates please feel free to call (951) 683-4994 or visit our website at www.highgrovehappenings.net click on the contact tab and open up the PDF file

Monthly newspapers are delivered to each Highgrove resident along with Public Offices and businesses in Highgrove, Grand Terrace, Colton, Riverside County and Riverside City.

(A minimal transaction fees will be applied)



New Colors of Highgrove T-Shirts available!

If you live in Highgrove you need a T-Shirt that has our Highgrove logo on the front and a 1916 Highgrove citrus label on the back. Some say: "Where Center St. is the main street and Main St. is at the edge of town" Others say: Where half of our main street is in the next county".

New Highgrove T-Shirts

"Highgrove Song"



Music Video

CD \$3.00

DVD \$10.00

Give us a call!
(951) 683 4994



New "American Pride"
T-shirts

now available \$10.00 each

Give us a call!
(951) 683 4994



BE CAREER READY IN 6 MONTHS OR LESS!

Southern California's Provider of Career Computer Training!

CALL NOW! START TOMORROW!

100% FLEXIBLE TRAINING - YOU WILL GET CERTIFIED!



The nation's only computer training provider
where certification is part of the curriculum.

1-800-561-MCSE

www.cta.edu (6273)

Inland Empire and Temecula Campuses

- Distance Learning • Voc Rehab • TAA/TRA • EDD/WIA • VA Voc & GI Bill
- Corporate Training

FINANCIAL AID TO THOSE WHO QUALIFY!

- Network Administrator
- Network Engineer
- Computer Repair
- Office Specialist

**GI BILL
APPROVED!**

Thank you
for your
service



HIGHGROVE HAPPENINGS

Highgrove MAC meeting Jan 18, 2017

7:00 PM Highgrove Library, 530 Center St. Highgrove. Public invited! Bring a friend!

Highgrove gets new asphalt and street signs



Even the streets that didn't need re-paving received new street signs.



This view of Center St. shows the eastbound lane that has been re-paved by Prospect Avenue. Thank you to the Riverside County Transportation Department for the improvements to the streets that we use every day!



**GROOMING
& SUPPLY**

(909) 824-6896

1270 Washington St. #8
Colton, CA 92324

Mon.- Fri. 8:00 am - 4:00 pm
Sat. 9:00 am - 4:00 pm

New 2 You

A Family Consignment Shop
Antiques, Clothes, Collectibles,
Furniture, Tools, Toys, Books

909-824-0220

22400 Barton Rd. Suite 3 Grand Terrace,

20% OFF
Your Shopping
with items
donated!

Dine In Take Out Drive -Thru

Home Style cooking
Our food is cooked to order, so please
allow a little extra time!

1320 E. Washington Ave.
Colton, CA 92324

909~420~0041



Spay neuter program available to Highgrove residents

The Riverside County Department of Animal Services is very pleased that the Highgrove community has embraced the pet service offered to the community. With a generous donation by the grantor, an organization which wishes to remain anonymous, the department has to date provided spay or neuter services to over 126 dogs and 12 cats at the Highgrove Library located at 530 Center Street in Highgrove.

The mobile clinic also provided complete core vaccination, rabies vaccination, microchip and flea treatments to your neighbor's pets.

Everyone knows that spayed and neutered pets live healthier and happier lives and vaccination prevents most of the common infectious diseases which can devastate young pets. Microchips provide permanent identification which can reunite lost pets with their owners. In the end, everyone benefits from this program, but it is the pet population which gains the most. The principal of herd health immunity helps protect even those pets which had not been vaccinated and a lowering of the reproduction rate of the population keeps unwanted pets from being born and out of animal shelters.

The community is welcome to stop by the Highgrove Library and obtain an appointment for a future spay neuter deployment or call 951-358-7335.

Allan Drusys, D.V.M., M.V.P.H.Mgt
Chief Veterinarian
Department of Animal Services
(951) 358 5034 www.rcdas.org



"Working together to improve
Riverside County for people and
animals".

TRANSMISSION TUNE-UP

SPECIAL

\$44⁵⁰

- Change Fluid • Clean Screen
- Replace Pan Gasket • Check Adjustments
- Road Test

For most Foreign & American Cars
Light Duty Mini Vans & Trucks



BUDGET TRANSMISSION, INC. #1

2129 3rd Street, Riverside, CA **951 683-0774**
(Corner of 3rd & Kansas)



Report Illegal Trash Dumping!



Call Riverside County Waste Management
951-486 3200

or

1 800 870 6600

To report illegal dumping in Riverside County online:
<http://user.govoutreach.com/riversideco/>

COMMUNICATIONS INNOVATIONS

2-Way Communication Specialists

Sales • Service • Rentals
Authorized Kennwood Sale & Service

(951)-784-5468
Fax (909)-784-2802

393 W. La Cadena Dr, Suite #1
Highgrove, CA 92501

Gary Dent
Highgrove Resident

HIGHGROVE HAPPENINGS

A BIG THANK YOU TO ALL OUR ADVERTISERS

Please Patronize Them: Without Their Support We Could Not Bring You The Local News



Open 24 hrs
ATM Machine Available
(951) 682 9000




New Year Sale!

\$20 OFF
On any Vacuum or Sewing Machine Service

SC679 Model Sanitaire Vacuum
\$159⁹⁹

Riccar Vacuums
Starting at **\$169⁹⁹**
MADE IN THE USA
Up to 7 Yr. Warranty

Coupon must be presented with machine for purchase or repair.
Exp. 1/31/17

2 Yr. Commercial Warranty

Inland Empire's Oldest Independent Dealer **909.825.0205**
Se Habla Español

GT SEW & VAC +
1231 E. Washington St., Ste. E • Colton

BUGS PLUS

PEST SERVICES

LIC. #8314

ALL HOUSEHOLD PESTS

Since 1992

- GOPHERS
- GROUND SQUIRRELS
- TREE SPRAYING
- WEED CONTROL

800-599-0101





Chris' Burgers

Craving Something New?
Come to Chris' Burgers!

Serving Breakfast Specials, Lunch Specials, and Family Packs at a GREAT Price. Now serving teriyaki plates & fried rice.

407 Iowa Ave., Highgrove, CA
(951) 781-8542

Open
Mon.-Sat. 8am-8pm
Sun: 10:00am-6pm

RELIABLE TIRE CENTER

SINCE 1971

Mike Jimenez
Brian Jimenez

445 Iowa Ave.
Riverside, CA 92507

951-684-1132
reliabletirectr@aol.com



ZORBA'S RESTAURANT

Serving Highgrove Since 1981
OPEN 7 DAYS
Mon.-Sat. 7am. - 10- p.m.
Sun. 8 a.m. - 9 p.m.
2 LOCATIONS TO SERVE YOU

1 450 Iowa Ave., Highgrove, CA • 951-686-5830
2 9961 Mission Blvd., Glen Avon, CA • 951-360-3977



RDO EQUIPMENT CO.

Your local John Deere Dealership



Big improvements are coming to Highgrove!

Address: 20 Iowa Ave, Highgrove, CA 92507
Phone: (951) 778 3700
Hours: M-F • 7:00 am – 5:00 pm

HIGHGROVE HAPPENINGS NEWSPAPER

"Dedicated to the improvement of our community through awareness and involvement in local issues"

Publishers & Co-Editors
Ardie Barnett
R.A. "Barney" Barnett
Composition
Ardie Barnett
Debbie Corona

Writers
R.A. "Barney" Barnett
Phil Turner
Dr. Cynthia Williams

HOT LINES
For Articles or Advertising

Call: (951) 683-4994
Cell: (951) 255-6645, (951) 255-6648 or
Alex: Advertising (951)448-7730
E-mail: highgrovenews@roadrunner.com
Web site: <http://www.highgrovehappenings.net>

FEEDBACK AND ARTICLES WANTED

