



HIGHGROVE HAPPENINGS



Dedicated to the improvement of our community through awareness and involvement in local issues
(FREE) Local News for the Highgrove Area **March 2014**

Transportation projects include I-215 freeway widening and Metrolink ground breaking for Perris Valley Line



Widening of the freeway closed the southbound exit of the I-215 at Center St. during construction but Iowa Ave. and Columbia remained open.



K rails blocked off the Center St. exit while new concrete was poured for the new southbound Center St. exit at Highgrove of Interstate 215.



The railroad bridge also had to be replaced because it was not wide enough. This view shows the abandoned track that used to lead to 84 Lumber just north of the railroad bridge over the I-215 freeway.

Cont. on P. 4



The Perris Valley Line was officially dedicated on Feb. 21, 2014. L-R: Senator Richard Roth; Supervisor Kevin Jeffries; Riverside Chamber of Commerce, Judy Carpenter; Congressman Mark Takano; Perris Mayor Daryl Busch; Supervisor Marion Ashley; Federal Transit Administration Region 9 Director, Leslie Rogers; Assembly member Jose Medina; and Riverside County Transportation Commission Executive Director, Anne Mayer.



Construction of Metrolink Station begins at Marlbor- ough instead of Highgrove!

After 12 years of requests from the public for a Metrolink station at Highgrove, grading is underway for a Metrolink station at Marlborough Avenue. RCTC owns 2 properties only one mile apart but the destinations are different and the Marl-

borough site only has destinations between 2 major cities instead of 3 and will cost over \$19 million dollars more. The Highgrove site could still transport commuters between both counties if Marlborough was sold! Transportation story begins on P. 4.

Coverage of Highgrove Metrolink Station Location denied by Press Enterprise! Story on P. 6

HIGHGROVE HAPPENINGS



Highgrove Community Center Hours: Mon-Thur 8am-4pm; Fri 8am-2pm

Highgrove Community Park Hours: Dawn to Dusk

Contact: (951) 341-6634 (951) 786-6912



THE NORTON YOUNGLOVE COMMUNITY CENTER

459 Center Street- Highgrove web site: www.nycchighgrove.com



Manager: Sherry Morris-Logan
Activity Specialist: Leila Santamaria
NICOA Office Assistant: Priscilla Burton
Lead Volunteer: Joe Morones
Maintenance: Bruce Millsap

"Family Service Association's Mission is to provide quality human services, child development, housing and senior services to residents of the Inland Empire and Desert Communities."

March 2014

Norton Younglove Community Center

459 Center St. Highgrove, CA 92507 (951) 341-6634

Special Points of Interest

• March 7th and 21st 9AM - 2PM County Regional Medical Center Mobile Health Clinic is here to help answer any questions and do blood pressure and blood sugar checks, general medical exams, and health screenings at no cost to you. No appointments needed!

• March 10th from 10:30 - 11:30 "Planning Healthy Meals" Hosted by County of Riverside Dept of Public Health Elida 951-358-5895: Join us for a series of Nutrition Classes (5) for Families. We'll discuss the secrets to healthy shopping, making family-friendly meals, discovering MyPlate, Rethink Your Drink, yoga class and more! The Network for a Healthy will be providing classes once a month every second Monday of each month through June. There will be prizes for attendance including cookbooks, aprons, shopping note pads, and a food demonstration with samples.

• March 21st 8-10 March 26th 10-11, resource table event: Southern California Gas Co. (SoCalGas) customers will soon be able to view their daily gas usage information online as SoCalGas begins installing Advanced Meters in the Inland Empire. The SoCalGas upgrade to its natural gas metering system involves adding a small battery-powered communication device on existing residential and business customers' meters throughout Southern California.

ADVANCEDmeter

With advanced meter technology, you will be able to:
• View your daily and hourly gas usage.
• Receive an up-to-date bill and bill alerts.
• See new "Ways to Save" section in My Account.

Visit socialgas.com (search "ADVANCED") for more information.

• March 21st 10AM-11AM Diabetes Prevention and Management Class On Thursday at no cost to you provided by Riverside Community Health Foundation hosted by Carolina 951-3530711. **Work shop topics:** "Power Over Diabetes", 4/4 "With All My Heart", 4/18 "Everybody Dance for your Health", 5/16 "Latino Kitchen", 6/6 "With Open Eyes" 6/20 "Stay in Touch" 7/18 "Something to Smile About", 8/1 "Healthy Mind, Healthy Body"

• March 26th 10-11: Presentation about common child burns, prevention, degrees of burn and burn first Aid!

Did you know?

- you can rent our Banquet Hall for your Wedding or Quinceañera.
- you can follow us on Facebook, Twitter and read reviews on Yelp.
- You can turn in the Highgrove Happenings Newspaper Puzzle



Facebook.com/ nycchighgrove

Aerodance Exercise

Morning: Mon-Thu 9am \$8/week or \$2.00/class. Evening: Mon-Wed, Fri 6:30pm \$2.50/class Sat 8:30am \$2.50

Sewing Class

\$7 per class Wed 10:30-12:30 Call Sandra 951-616-7787 for project materials info and clothing alteration services.

3-D Gelatin Molding Class

5 minimum sign up to schedule class. \$15 class/10 class course. Completion certificate awarded

Child & Me Classes

Thursdays 11:30 - 12:30. FREE Program

Polynesian Dance Class

Mon & Wed 5:30 PM \$3/class or \$5/week

The Art of Cake Decorating Baking

Tues 6pm intensive course/25 classes. \$15 per class. Info: Marivel 951-275-6815. Completion certificate awarded.

E-Taekwondo United

(Karate Class) Mon & Wed 6PM call Master Elvis Chavez .909 - 293-8538 for detailed info.

Square & Line Dance

Tue 6:30pm \$6 donation. Info: 909-823-0294 or 951-788-4245

Banquet Hall

Take a look at our beautiful banquet hall. Whether you're having wedding, birthday, anniversary, or company holiday party our banquet hall is the place for you. The room capacity is 150 people. Rental of the hall is \$100 per hour (Kitchen available for additional cost). A security guard or two may be necessary if alcohol is served. To reserve your party's date a \$200 non-refundable deposit is required. For further details contact center.

por tu familia American Diabetes Association. Cure • Care • Commitment®

Do you have Diabetes?

Like to Prevent it?

Your family needs you to be healthy and feeling your best, so that you can be there for them in the future.

Learn what You can Do
Workshops Topics

"Power Over Diabetes"3/21
"With All My Heart"4/4
"Everybody Dance for your Health"4/18
"Health and Flavor in the Latino Kitchen"5/16
"With Open Eyes"6/6
"Stay in Touch"6/20
"Something to Smile About"7/18
"Healthy Mind, Healthy Body"8/1

Time:
8:00-9:00 am

Place:
Community Center
(459 Center Street
Highgrove, CA 92507)
Norton Younglove

For more information please contact Leila Santamaria at (951) 341-6634 or Carolina Ramirez at (951)353-0711

Classes will be conducted in Spanish

Free Workshop!

Riverside Community Health Foundation Promoting Your Health SINCE 1973

PLANNING MEETING FOR HIGHGROVE DAY MARCH 5TH.

We have had several Highgrove Day Planning meetings at the Library and as usual only a few of the regular volunteers showed up. Year after year we ask the community and the MAC board members to get involved with this community event but it always falls on the shoulders of just a few people.

- Do you like to attend the Annual Highgrove Day event?
- Do you enjoy it?
- Do you realized all the work that goes into it?

If you answered yes to even one of these questions then why haven't you offered to get involved? If new volunteers do not help in planning, then we may have to cancel this event. This is going to be our 29th annual consecutive Highgrove Day. What a shame if we couldn't continue this long tradition! What a shame if this occasion has to be discontinued because of lack of participation from our own community. In the past we have had a lot of

friends from other places who volunteer to help us but we need help from people from Highgrove.

You're probably are saying but what can I do to help?

We need people to make calls, help out in the kids zone, help with the car show and attending the planning meetings to input your ideas.

Our next planning meeting will be March 5th at 7 pm at the Highgrove Library.

The year's theme is SUPER HEROS! Dress as any cartoon super hero or someone that you think is a hero.

If you are interested in seeing this continue, we ask that you come to our next meeting and find out if there is something that you can do to contribute to this event.

We would like to see some new faces at the library on March 5th at 7:00 pm to help plan HIGHGROVE DAY that will be on May 10, 2014.

CHAMPIONS for CHANGE Network for a Healthy California

Healthy Eating Series

Join us for interactive learning and a lively discussion about nutrition, physical activity, and your family's health.

DO YOU KNOW WHAT FOODS ARE BEST FOR YOUR FAMILY?

Riverside County Department of Public Health is providing a series of classes. Get the information you need to make healthy changes to improve the quality of your life. Everyone is welcome to attend - **it's FREE!** Please join us!

Address:
459 Central St.,
Highgrove, 92507

For more information, please call:
(951)341-6634

Dates: Second Monday of every month
• February 10th
• March 10th
• April 14th
• May 12th
• June 9th

Time: 10:30 to 11:30 AM

Free cookbook and prizes with regular attendance!

County of Riverside Department of Public Health

For CalFresh information, call 1-877-847-3663. Funded by USDA SNAP, an equal opportunity provider and employer. Visit www.cachampionsforchange.net for healthy tips. •California Department of Public Health

HIGHGROVE HAPPENINGS



Graffiti Hot line

951-955-3333

<http://www.rcgraffitibusters.com>

Street Lights Out in Highgrove

Report Street Light outage: call (951) 955-3224

or e mail Hazel Spruell hspruell@rivcoeda.org.

Provide address and cross street and pole # if possible.

7th Annual Walk on Blue Mountain set for Saturday, March 8

Rain at last! Perhaps that will encourage some wildflowers to pop up for the 7th Annual Walk on Blue Mountain. Once again the gates at Honey Hill Drive and Palm Avenue in Grand Terrace will open 8:00 a.m. on March 8. And early arrivals get the best parking.

You are asked to begin your walk no later than 10:45 a.m. It's a great opportunity to explore the mountain, take in the great views and meet your friends. Friendly pets are allowed but must remain on leash. The walk is free however this year Friends of Blue Mountain are especially encouraging donations to make Blue Mountain accessible to all throughout the year.

The walk is sponsored by Friends of Blue Mountain, The Foundation of Grand Terrace and the San Gorgonio Chapter of the Sierra Club. Friends of Blue Mountain (FOBM) is dedicated to the long-term protection of Blue Mountain's natural habitats and open spaces. The organization's vision is to create a wilderness park on the mountain and establish hiking and equestrian trails connecting Blue Mountain with neighboring Box Springs Mountain Reserve.

Past crowds have peaked at over 1,000 for this annual event. No wonder, as the sights are better than even neighboring Box Springs Peak which is slightly higher than the 2,428 Blue

Mountain. Not only are there great views of our signature peaks such as Tahquitz, San Gorgonio, Baldy and Santiago, there is a bit of history to view as well.

To the southwest is Riverside founded in 1870 by John W. North but was "discovered" by Juan Bautista De Anza in 1774 although Native American people frequented the area previously. Highgrove between Mt. Rubidoux and the peak originally was referred to as Riverside Heights in 1883 although originally the area dates to Mexican land grants between 1830 and 1840.

Highgrove subsequently became known as Merill, then East Riverside and finally Highgrove in 1986.

The name of Grand Terrace also was originally part of East Riverside in 1887 but didn't become known as a city until it was incorporated in 1978.

March is perfect for enjoying the magnificent views all along the hike. Just look how clear it was last year. All participants should bring water, a hat, sunscreen and sturdy footwear along with a windbreaker as winds tend to be continuous at the top. And don't forget your camera!

For more information please visit Friends of Blue Mountain's website at www.friendsofbluemountain.org or e-mail ralphsalisbury@att.net.

HIGHGROVE SHERIFF REPORT

Ending February 10, 2014

Part 1 crimes decreased from 8 to 4 over the past 2 weeks in Highgrove. The total of violent crimes increased from 1 to 3, homicide stayed the same at 0, rape stayed the same at 0, Robbery stayed the same at 0, aggravated assault increased from 1 to 2, property crimes decreased from 7 to 1, burglary decreased from 3 to 0, auto theft decreased from 3 to 0, larceny theft stayed the same at 1, arson stayed the same at 0, and vehicle burglary stayed the same at 0.

Sheriff Dept.: (951) 776-1099 X 5 (Non emergency)

Capt. Danny Feltenberger (951) 955 2600

Lieutenant. Ken Ditton (951) 955 2629

Hot line tips for Highgrove area: (951) 955-2600



Report Illegal Trash Dumping!



Call Riverside County Waste Management

951-955-5650

To Report illegal dumping in Riverside County online:

<http://user.govoutreach.com/riversideco/>

Protect
Our
Nation's
Youth

Highgrove / Riverside / Grand Terrace



951.712.8322
951.500.9605

www.highgroveponyleague.com

Come Play Baseball With Us!!! 2014 Spring Sign-ups

Registration Information:

- * Call for Registration Appt. & for more info
- * Copy of child's birth certificate required

2014 Baseball Fees

\$10.00 discount if Fully Registered (all necessary paperwork signed and received) and PAID IN FULL before Dec 31, 2013

Shetlands \$55.00: 4.5, 5 & 6 yrs Pinto \$65.00: 7 & 8 yrs
Mustang \$65.00: 9 & 10 yrs Bronco \$65.00: 11 & 12 yrs
13 + yrs - check with us for full team availability
Ages are by April 30th, 2014

For More Information Contact:

Bill - 951.712.8322 - billbartel@yahoo.com or Carey - 951.500.9605 - highgroveponyleague@yahoo.com

With the new authorized PONY BALL travel ball division, the Southwest Pony District is now in full swing. Most of all PONY groups intend to be a part of this new venue.

Highgrove is in full swing now with spring sign-ups at the snack bar on Saturdays from 9:00 am until noon.

Board meetings are on the second Tuesday of each month for the next three months. If you intend on staying on the board you must attend these meetings. We have new excit-

ing news to share about the 66ers participation and sponsorship and the NEW travel ball division for Southwest PONY.

Also the new larger area that Highgrove can draw from for teams.

For more information please contact billbartel@yahoo.com or

Carey (951) 500 9605 or highgroveponyleague@yahoo.com

All paid parents are invited to the general board meetings.

ADVERTISE YOUR BUSINESS WITH US!

Now accepting Credit Card Payments!

You will find that our rates are very reasonable and now for your convenience we are accepting Credit Card Payments and Pay Pal!

For our advertising rates please feel free to call (951) 683-4994 or visit our website at

www.highgrovehappenings.net click on the contact tab and open up the PDF file

Monthly newspapers are delivered to each Highgrove resident along with Public Offices and businesses in Highgrove, Grand Terrace, Colton, Riverside County and Riverside City.

(A minimal transaction fees will be applied)



New Colors of Highgrove T-Shirts available!

If you live in Highgrove you need a T-Shirt that has our Highgrove logo on the front and a 1916 Highgrove citrus label on the back. Some say: "Where Center St. is the main street and Main St. is at the edge of town" Others say: Where half of our main street is in the next county".

"Highgrove Song" Highgrove & T-Shirts

Music Video



1916 citrus label

CD \$3.00

DVD \$10.00

Give us a call!

(951) 683 4994

\$10.00 Adult S,M,L

\$12.00 Adult XL, 2XL

T-shirt samples can be seen at:

Zorba's Burgers: 450 Iowa Ave.

Chris' Burgers: 407 Iowa Ave.

HIGHGROVE HAPPENINGS

Is widening the freeway the only solution to our transportation problems?

We have all been through the process of trying to stay between the K rails during the widening of the I-215 freeway. The Newport Ave. bridge was torn down and a new one is being constructed that will be wide enough to span the widened freeway. The Union Pacific Railroad bridge has been removed but won't be replaced resulting in an abandoned railroad on the east side of the freeway between Grand Terrace and Highgrove.

These pictures show the construction of a new bridge across the I-215 freeway that will be the new BNSF main line when it is completed.

Instead of widening all of the freeways it is time to consider other modes of transportation such as Metrolink commuter trains where you can park and ride. Please turn to page 6 to see how difficult it is to get a transportation agency to recognize that widening the freeway is not the only solution!



The new bridge over the freeway is under construction and the old bridge shown on the right will be removed when the new bridge is completed.



This view shows the old bridge that is still in use and the base of the new bridge with the support columns in the middle of the freeway.



This old BNSF railroad bridge over the I-215 freeway is too short for the widened freeway and will be removed when the new bridge is ready.



The vertical lines are rebar that will enforce the concrete base of the bridge.



The walls of the widened freeway have decorative scenes that are cast into the concrete and they are unique to each area while being functional.

GRAND TERRACE SMOG CENTER

ASE State of California LICENSED SMOG CHECK

Edmund Esquivel Jr.
12210 Michigan Street
Suite 1
Grand Terrace, CA 92313
909-824-7664
(SMOG)

EVEN TIDE TATTOO

Billy Barnett (owner)
760-753-8282
128 Aberdeen, Cardiff-by-the-Sea, CA 92007

Bright Smile Associated Teeth Whitening Center
Graduate of Loma Linda School of Dentistry -1981

William E. Darwin, D.D.S.

GENERAL & LASER DENTISTRY & ORTHODONTICS
22284 Barton Rd. Grand Terrace, CA 92313
(909) 783-3050

Conscious sedation available
Nitrous Oxide

Bob Becerra
Income Tax Service

bits Tax & Financial Consultant
909-425-3990
3606 E. Highland Ave, Highland, CA 92346

Moreno Handyman & Lawn Care Service
Re-modeling, Roof Repairs, Plumbing, Electrical, Flooring, Patios, Drywall Repairs, Acoustic Removal, Texture, Interior/Exterior Painting, Windows, Shower Doors, REO Trash-Outs, Lawn Care and Landscaping

FREE Estimates
All Work Guaranteed

Morenohandymanservice@gmail.com
(909) 301-3075
(909) 910-4816

Jason Moreno

3-RING DESIGN * PRINT MANUFACTURE

GRAPHIC DESIGN
OFFSET PRINTING
CUSTOM GARMENTS
ADVERTISING SOLUTIONS
TEAM SPORT OUTFITTER

909.680.4971
22737 Barton Rd. #7 Grand Terrace, CA 92313
threeringcreative.com
@3ringcreative

HIGHGROVE HAPPENINGS

More new housing in Highgrove to be ready by this Christmas!

There has not been very many new residences built in Highgrove since the Riverside County Economic Development Agency released figures in 2008 that showed that there were 1,550 acres of vacant land in Highgrove.

But the number of people moving to Highgrove should be increasing by the end of this year.

We all have been waiting for many years for new homes to be built in the Spring Mountain Ranch. As we previously reported, the developer invested \$250,000,000.00 in grading and infrastructure and then sold to RWR homes who was the builder that was going to build the homes on the Spring Mountain Ranch property.

And as you may also know, RWR homes went bankrupt and the Bank ended up owning the project.

During a recent visit to i-Star Financial, the bank that now owns the property, I talked to Allen Barrett Vice President of Land Develop-

ment and Donald Povieng, Director of Planning and Development for KB homes and both agree that there goal is to have homes ready for move in by this Christmas.

I know that they have been working very hard trying to pick up where RWR homes left off and as you know this has been a very long process. The homes naturally will be built in phases and at this point I can not tell you the price or which area will be built first. You will be the 1st to know the minute we find out!

Another project that is already under construction that will bring more people to Highgrove is an 89 unit apartment complex being built by Workforce Home Builders, under the direction of President Tony Mize. The new apartment complex is being built on the south side of the Highgrove library between Center St. and the field next to Spring Street. Tony Mize said their goal is to also have the apartments ready for move in by this Christmas. Adv. on P. 12.

Zoning change approves 68 acres for future housing!

On Feb. 25, 2014 the Riverside County Board of Supervisors unanimously approved a request from the Highgrove Municipal Advisory Council to change the Bixby property zoning of 68 acres in the middle of Highgrove from warehouses to residential. Part of General Plan Amendment # 1126 reads: ***"The Planning Director recommends that the Board adopt an order initiating proceedings for the above referenced general plan amendment to initiate a General Plan Amendment from Community Development: Light Industrial, to Community Development: Medium Density Residential."*** We thank the Board of Supervisors for listening to the people of Highgrove to prevent warehouses from being built in the middle of our community.



Tacos El Jr. #6

Banana Splits & Deserts

Open Daily
Mon-Sat 7am-9pm Sun 7am-8pm
Family Restaurant Serving Breakfast

COCKTAILS: Margaritas, Piña Colada, Daiquiri, Wine

Happy Hour
2 pm-6 pm M-F



Get your color fix.

Imagine your world awash with color – rich, gorgeous shades that'll make you look twice. I'm talking sheer mineral makeup that glides on and stays on. And fearless looks that are ready to wear anywhere. Ask me about ideas that'll awaken your inner makeup artist!

Ardie Barnett
(Independent Beauty Consultant)
www.marykay.com/ardiebarnett
951-683-4994 cell 951-255-6645

FINANCIAL FOCUS

How Will Social Security Fit into Your Retirement Income Strategy?

Have you given much thought to collecting Social Security? The answer probably depends on how old you are — but whatever your age, you'll want to consider the best way of incorporating Social Security benefits into your retirement income strategy.

Of course, if you have several decades to go until you retire, you might be wondering if Social Security will even be there for you at all. The basic issue is that the Social Security system is experiencing a sharply declining worker-to-beneficiary ratio. In plain English, this means that fewer workers are contributing to Social Security while the huge baby boom generation is retiring and taking money out. Still, Social Security has enough money to pay full retirement benefits to every eligible American until 2038, according to the Congressional Budget Office. After that point, benefits would have to be reduced unless changes are made to the Social Security system.

And several changes have indeed been proposed. Given that we do have nearly 25 years until benefit cuts may need to be made, it seems reasonable that some type of solution could be reached to put Social Security back on solid ground. In any case, when thinking about your retirement income, you need to focus on those things that you can control — such as when to start taking Social Security and how you can supplement your Social Security benefits.

Depending on when you were born, your "full" retirement age, as far as collecting Social Security benefits, is likely either 66 or 67. You can start getting your checks as early as 62, but if you do, your monthly payments could be reduced by as much as 30% — and this reduction is permanent.

Consequently, if you can support

your lifestyle from other sources of income — such as earnings from employment and withdrawals from your IRA and 401(k) — you may want to postpone taking Social Security until you reach your full retirement age. In fact, you can get even bigger monthly checks if you delay taking your benefits beyond your full retirement age, although your payments will "max out" once you reach 70. Keep in mind, though, that other factors, such as your anticipated longevity, should also enter into your calculations in considering when to take Social Security.

As mentioned above, your retirement income may also include withdrawals from retirement accounts, such as an IRA and a 401(k), along with other investments, such as a fixed annuity. And these other accounts are quite important, because Social Security provides, on average, only about 40% of retirement income for the average 65-year-old today.

Consequently, in the years and decades before you retire, contribute as much as you can possibly afford to these other accounts. Given the advances in medical care and the greater awareness of healthy lifestyles, people are living longer than ever — which means you could spend two, or even three, decades in retirement.

To enjoy those years fully, you'll need adequate income. By planning ahead, you can determine how best to fit Social Security into your retirement income strategy. Every move you make to help "secure" your retirement can pay off for you in the long run.

This article was written by Edward Jones for use by your local Edward Jones Financial Advisor.

Editor's note: The opinions expressed in this article are the viewpoints of its author and do not necessarily reflect the viewpoints of the "Highgrove Happenings"

Edward Jones

MAKING SENSE OF INVESTING

Shawn Wm Price
Financial Advisor



1776 W Park Ave, Suite 128
Redlands, CA 92373
Bus. 909-307-9539 Cell 909-435-5131
Fax 800-520-8114
shawn.price@edwardjones.com
www.edwardjones.com
California Insurance License OC24309

HIGHGROVE HAPPENINGS

Coverage of Metrolink Station Location denied by Press Enterprise!

Since Sept. 5, 2013 I have been trying to get the Press Enterprise to print an article about the differences in destinations and costs between a Metrolink station at Highgrove compared to the Marlborough Ave. location. I have submitted several articles but nothing has been printed.

Finally, over 5 months later and after several requests to the Editor, on Feb. 12, 2014, a Press Enterprise reporter was assigned to come to Highgrove and meet with me to see both locations.

We went to the Highgrove location and the Marlborough Ave. location and drove past the 68 acres of vacant land owned by Bixby Land Co. where more homes have just been approved. We also drove by the former Spring Brook Estates and Spring Mountain Ranch property to show that a Metrolink station is needed in Highgrove. Our tour included going over the new Iowa overpass where the Highgrove location can be seen from the overpass.

On Feb. 12, 2014, I gave the reporter information that included the cost of both properties and information to show that the Highgrove location is larger, has daily Metrolink trains, and is \$19,145,310.00 cheaper than building a station at Marlborough Avenue.

Almost a week later I received a call from the reporter saying that the information I gave to her for her article, was not going to be printed. Another reporter had been assigned to cover the Perris Valley Line ground breaking on Feb. 21, 2014 and this is the reporter I should be talking to if I wanted to continue.

The P. E. reporter that came to Highgrove was able to see why the public has been so upset for 12 years. But her story will not be printed because it was stopped by someone in management at the Press Enterprise! I had hoped that with the new owners they would print *"More diverse voices and views"* like they advertised in

their paper, but the complete story will only be printed in our small paper because the Highgrove Happenings is the only place you will read this information. Everything given to the Press Enterprise was the truth and the cost items were correct because they were shown on RCTC letterhead. These facts should be alarming to every taxpayer in both counties and I was counting on getting this information to the public in a real newspaper!

The decision to build a station at Marlborough Ave. has been based on politics and not on common sense! Here are a couple of items I gave to the Press Enterprise reporter on Feb. 12, 2014 to use for research for an article. The first one is titled:

FACTS REVEAL BEST CHOICE FOR FUTURE METROLINK STATION!

By R. A. "Barney Barnett
Highgrove Station Vs. Marlborough Station:

Both locations are vacant land, both are owned by the Riverside County Transportation Commission, and they are only one mile apart!

RCTC spent \$16,771,000.00 for these two pieces of vacant land but the Marlborough Ave. property is not needed.

Cancelling the Marlborough Ave. station and building the station one mile away at Highgrove will not stop the progress of the Perris Valley Line.

The Highgrove property is unique because it is bordered by two different railroads. The BNSF RR is on the west side and the Perris Valley Line RR is on the east side.

The Highgrove property is 17.22 acres with room for future growth but the Marlborough Ave. property is on a dead end street with only 9.75 acres and no room for future growth. Only one property is needed because Highgrove could be used for 4 purposes: (1) a curved track to connect the Perris Valley Line track to the

BNSF main line (2) a platform on the west side using the existing Metrolink trains between San Bernardino and Riverside counties (3) a platform on the east side for future commuters between Perris and San Bernardino and (4) a parking lot in the middle that could take commuters in 3 different directions-Riverside, San Bernardino, and Perris.

On July 15, 2006 Metrolink trains going through Highgrove increased from 5 days a week to 7 days a week. These commuter trains currently go through Highgrove every day of the work week and on Saturdays and Sundays.

For over 12 years, since Nov 27, 2001, written resolutions from surrounding cities and residents have ask the Riverside County Transportation Commission for a Metrolink stop at Highgrove but RCTC still continues to oppose stopping any of these existing or future Metrolink trains.

Over 20,000 Metrolink trains have passed through Highgrove without stopping for passengers due to opposition from RCTC.

In addition, RCTC is only charging 38% of the actual cost they paid for the Highgrove property against the Perris Valley Line in order to try and stay under the \$250,000,000.00 federal limit for the entire Perris Valley Line project. RCTC claims they only need the width of the track to connect the two railroads but their remaining unused property is the **same exact property that has been needed for a parking lot for the last 12 years.** RCTC paid \$8,625,000.00 for the Highgrove property but they admit they do not need 62% of this property. This 62% equals \$5,347,500.00 that they already have invested in

Highgrove. The \$5,347,500.00 plus the \$8,146,000.00 RCTC paid for the Marlborough property plus the cost of \$5,651,810.00 to build a station at Marlborough means a savings of \$19,145,310.00 in taxpayer money if the Marlborough property were sold and the station were built at Highgrove! RCTC purchased both properties from the same investor for \$16,771,000.00. Use your calculator to check my cost figures and look at our web site:

www.highgrovehappenings.net
No Metrolink service is planned between Riverside and San Bernardino on the Perris Valley Line. Future Metrolink trains will not go to San Bernardino from anywhere on the Perris Valley Line including Marlborough Ave., but commuters at Highgrove can already go between Riverside County and San Bernardino County on the existing Metrolink trains if these trains would just stop long enough for passenger!

The second item given to the Press Enterprise is titled:

QUOTES ABOUT METROLINK STATION LOCATION

By R. A. "Barney" Barnett
Dated Feb. 12, 2014

"Taxpayers are entitle to know how their transportation funds are being spent."

"Both properties are owned by RCTC, both are still vacant, but only one of them will serve both counties."

"The Highgrove location is only 1/2 mile east of the I-215 freeway at the Center St. exit and would help relieve freeway traffic congestion by providing efficient commuter rail transportation between counties."

"The entrance to the south end of RCTC's Highgrove property was built in July of 2008 but has never

Highgrove Happenings is looking for help!

Highgrove Happenings is in its 20th year but now we are asking for your help. We need writers, reporters, interns, and people to sell advertising or who have computer knowledge or know InDesign. We need your articles and camera or cell phone photos that will help us to continue to bring you the local news. No experience necessary. We will train you if you are able to help in any way. If you can help Please call (951) 683 4994 or contact us at: highgrovenews@roadrunner.com "Barney" and Ardie

**Intern
Wanted**

Dine In Take Out Drive-Thru

Home Style cooking
Our food is cooked to order, so please allow a little extra time!

1320 E. Washington Ave.
Colton, CA 92324
Next to (Hand Car Wash)



TRANSMISSION TUNE-UP \$44⁵⁰



- Change Fluid • Clean Screen
- Replace Pan Gasket • Check Adjustments
- Road Test

For most Foreign & American Cars
Light Duty Mini Vans & Trucks

BUDGET TRANSMISSION, INC. #1



2129 3rd Street, Riverside, CA
(Corner of 3rd & Kansas)

951 683-0774



Expires 5/31/2014

HIGHGROVE HAPPENINGS

been used! This paved entrance is near the new Iowa Ave. overpass and has sidewalks, landscaping, and light poles but the road has been closed by a pipe gate since it was built over 5 1/2 years ago!"

"Building the station at Highgrove will not stop construction of the Peris Valley Line!"

"RCTC owns property right next to the existing daily Metrolink trains at Highgrove so why are they building a station 1 mile away where there are no Metrolink trains?"

"What is the logical reasoning behind RCTC's choice for a Metrolink station or has their choice been based on politics?"

"Look at the facts and figures when comparing the two locations."

"No improvements should be made to RCTC's Marlborough Ave. property until an independent study is made to determine which location is the best choice for a Metrolink station."

Over 20,000 Metrolink trains have passed through Highgrove since July 15, 2006 when trains were increased from 5 days a week to the present 7 days a week. And this does not include any of the previous 5 day per week trains! On Feb. 15, 2009 RCTC's Executive Director, Anne Mayer stated in the Press Enterprise: **"We have to put the stops where they serve the most people."**

But 12 years later these next statements still mean nothing to RCTC!

Are all of these people wrong too about the Highgrove Metrolink location?

Mary Crayton, RCTC Commissioner from Canyon Lake: (RCTC meeting Feb. 11, 2009) stated that she

"was not satisfied why Highgrove has not been considered and that they never went to Highgrove to look at the property". She stated: "they should consider the property at Highgrove".

Bob Buster, Riverside County Supervisor: (Statement Oct. 11, 2006)

"Highgrove is at the fulcrum, the pivot point of transportation between the 2 counties. You can not ignore the geographic reality of both the freeway and major rail lines and there is available land that will soon be snapped up for other uses. This is the key site for the future of the Inland Empire".

Marion Ashley, Riverside County Supervisor: (Letter, Oct. 14, 2009)

"Over the course of more than a decade, the Riverside County Transportation Commission has considered and repeatedly rejected the request of Highgrove residents for Metrolink service"

Jeff Stone, Riverside County Supervisor: (RCTC meeting Feb. 11, 2009)

Was sympathetic to the concerns of those living near the track and said that *"the I-215 is reaching capacity and that people need to get out of their cars, onto the tracks and to their destinations."*

Bill Emmerson, California State Assembly- Dist. 63: (Letter Aug. 14, 2006)

"I am very supportive of bringing a Metrolink Station to Highgrove because I agree that it is an appropriate location to help solve traffic congestion for this fast growing area".

Mark Hanson, UCR Professor (emeritus): (Letter Feb. 22, 2009)

"For us the "no brainer" aspect of the sitting decision comes down to which station could provide the greatest service to commuters of the region when the Metrolink trains come on line. That has to be Highgrove where one station could serve in three directions: San Bernardino, Riverside and the PVL".

Roger Berg, RCTC Commissioner from Beaumont: (RCTC meeting Feb. 11, 2009) *"The Highgrove station may have some merit, more parking is needed and gridlock will only get worse".*

University Neighborhood Association: (Letter Oct. 21, 2005)

"Our meeting was standing room only and by a unanimous show of hands, we voted to support a train stop in Highgrove".

(Four years later)

University Neighborhood Association: (Letter Nov. 17, 2009)

"Our community continues to support this concept because that loca-

tion seems to offer greater overall flexibility. In addition to servicing Metrolink traffic from the PVL, the Highgrove station establishes services to existing Riverside and San Bernardino traffic, and opens opportunities to increase the number of potential riders through the expanded capacity and the flexibility to serve them".

Robin Lowe, RCTC Commissioner from Hemet: (RCTC meeting Feb. 11, 2009)

"Recognized the amount of work that has been done on this project and said they need to revisit this idea".

James Potts, RCTC Commissioner from San Jacinto: (RCTC meeting Feb. 11, 2009)

"It is the right project for the right time and it would open up other areas where seniors could go instead of just driving locally".

Bob Buster Letter July 17, 2006:

"Highgrove is the right place for a regional, intermodal station, at the junction of the main lines and the 215 freeway. Highgrove still has ample land and the community and Grand Terrace want the station".

Riverside Land Conservancy: (Letter Oct. 18, 2005)

"At this time we see no objection to development of this parcel for such a Metrolink Station but want

Cont. on P. 10

Are You Ready for Winter?

Preventative maintenance can save you hundreds of dollars in overpaying utility companies and unforeseen breakdowns.

Beat the Cold Weather and Call Us Today!

\$69 SPECIAL

**20 Point
Furnace Inspection**
with filter included.
Expires Feb. 28th, 2014

Home of the

\$59

**Diagnostic Any Time -
Any Day!**



FINANCING AVAILABLE

**Romaine's 24hr
HEATING & AIR**

Licensed and Fully Insured • C-20 Lic # 978881 • Se Habla Español

FREE 2nd opinion on ANY licensed contractors' quotes for repairs and/or installations.

You can count on us, we'll be there!

(888) 778-5839

Sales • Service • Installation • Residential & Commercial

HIGHGROVE HAPPENINGS

Riverside Eagles # 997 celebrates 109th birthday



L-R: Ed Mote, Past President Aerie 997; Frenchie DeVille of Aerie 997, Past State and Western Regional President; Bill Metz Past Worthy President; Larry Steckatee current State President and Roger Lawson of 997, Past State President and past Western Regional President. 109 Years!



Wilden Pump hosts mobile blood drive



L-R: Mark Newton, driver, Yea Kue, Alexandria Bernhoft and Thu Thach took time out for a photo after I gave blood on Feb. 17, 2014 at the mobile Lifestream blood collection unit at Wilden Pump in Grand Terrace.

Marilyn Monroe still a huge celebrity after all these years!

We went to Palm Springs on Feb. 10, 2014 to see the 26 ft. tall sculpture of Marilyn Monroe by American artist and Johnson & Johnson heir, Seward Johnson. The sculpture is inspired by the famous photograph by Bernard of Hollywood from the film "The Seven Year Itch." She is located at what many call the corner of "Main and Main," Palm Canyon & Tahquitz Canyon Way in the heart of downtown Palm Springs. Marilyn Monroe had many legendary ties to Palm Springs.



Totally NAILS & SPA

1100 S. Mt. Vernon Ave. #F
Colton, CA 92624
(In Wal Mart shopping center)

(909) 825-5324
Mon. - Fri.: 9:30 am - 7:30 pm
Sat.: 9:30 am - 7:00 pm
Sun.: 10:30 am - 6:00 pm

IE ALARM SYSTEMS
FIRE - INTRUSION - ACCESS CONTROL - CLOSED CIRCUIT TV

Richard Jimenez
General Manager
richard@IEalarm.com

IE Alarm Systems
1175 Center Street
Riverside, CA 92507
www.IEalarm.com
Lic #ACO4343 • CL#670389

Direct: 951.367.0762
Cell: 909.208.7997
Office: 951.686.2029
Central: 866.703.2896
Fax: 951.686.6318

ACE Hardware

Bauman's Building Supply

3199 Kansas Ave.
Riverside, CA 92507
Phone: (951) 686-5732
Fax: (951) 686-5740

AMERICAN NAILS

Professional Nail Touch for:
Ladies & Gentlemen

HOURS
Mon/Sat 9 am - 7 pm
Sunday CLOSED

22488 Barton Rd.
Suite 102
Grand Terrace, CA

909-370-1704

COMMUNICATIONS INNOVATIONS
2-Way Communication Specialists

Sales • Service • Rentals
Authorized Kennwood Sale & Service

(951)-784-5468
Fax (909)-784-2802

393 W. La Cadena Dr, Suite #1
Highgrove, CA 92501

Gary Dent
Highgrove Resident

J.W.'S GUNS AND ACCESSORIES

HOURS:
MON-FRI 8:30-5:00
SAT 9:00-2:00

250 Iowa Ave.
Riverside, CA 92507
(951) 682-3270

TRLM
TERRA LOMA REAL ESTATE, INC.
#00753574 CA

Edward "Gene" Carlstrom
Broker

(909) 825-2001 Cell: (951) 202-3928
12139 Mt. Vernon Avenue
Grand Terrace, CA 92313
TRLM@aol.com

State Farm®
Providing Insurance and Financial Services

Gary Echito

3239 Chicago Ave.
PO Box 5578 Riverside, CA 92517
Off# (951) 684-8450
Fax# (951) 684-8453
gary.echito.b88k@statefarm.com

Like a good neighbor, State Farm is there.®

HIGHGROVE HAPPENINGS

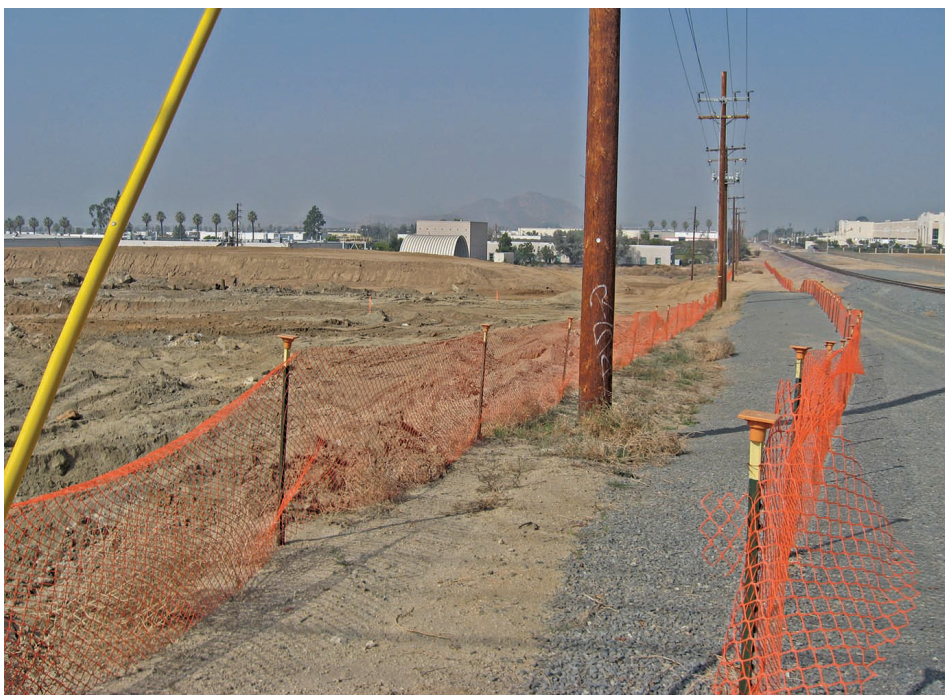
Grading underway for Marlborough Ave. Metrolink Station



This sign is visible from Marlborough Ave. showing the construction site of the Marlborough Ave. Metrolink location. Marlborough Ave. dead-ends at the base of Sugarloaf Mountain that can be seen in the top right photo.



Many rocks have been removed and the grading is underway. Years ago this location was known as "Point of Rocks" on the railroad. There used to be a giant rock formation located on RCTC's Marlborough Ave. property.



This is the N/W corner of the Perris Valley Line at Marlborough Avenue. Grading is underway to remove the rocks but more dirt will need to be brought in to fill the hole where the Marlborough Station is planned.



The vehicle is headed west on Marlborough toward Iowa Avenue. There is no provision for future commuters to get from this location to San Bernardino County because future Perris Valley Line trains will only take passengers between Riverside and Perris. **This property should be graded, compacted, and sold** to try and recoup some of the \$8,146,000.00 RCTC paid for this unneeded property. Future trains could go around the proposed curved track at Highgrove without stopping and not stop anywhere between Riverside and Moreno Valley after the Perris Valley Line is completed.

ALWAYS A FAIR PRICE



FAIR PRICE CARPETS HAS BEEN SERVING THE ENTIRE SOUTHERN CALIFORNIA AREA FOR OVER 55 YEARS! WE OFFER QUALITY PRODUCTS AND HONEST, DEPENDABLE CRAFTSMANSHIP. YOU WILL ALWAYS FIND FAIR PRICED CARPETS PROMPT AND COURTEOUS.



CELEBRATING 55 Years of Service

THEN AND NOW

Carpet • Tile • Hardwood • Laminate • Vinyl • Natural Stone & Window Coverings
"We've Got Your Commercial/Residential Needs Covered"

Fair Price Carpets

Original Owners Don & Marlene Ritz Selling Flooring Since 1957

(951) 684-8578
 1070 Center Street • Riverside, CA
www.fairpricecarpets.com

Tuesday - Saturday 8:30AM - 5:30PM

Se Habla Español License #331756








FAIR PRICE CARPETS

The floor covering experts since 1957!

HAND CAR WASH USA

100% Hand Wash

\$300 OFF

Any Red, White, or Blue Package Wash.

Valid with coupon only.
Not with any other coupons
Expires 03/31/2014

NEW ALL AMERICAN PACKAGE

\$500 OFF

Valid with coupon only.
Not with any other coupons
Expires 03/31/2014

1340 E WASHINGTON ST., COLTON (JUST EAST OF HWY. 215)

909-824-1597
 Regular and full size SUV/Van/Truck At Additional Cost

Visit Us At www.handcarwashusa.com




HIGHGROVE HAPPENINGS

Additional quotes from community leaders, cities and the public!

Cont. from P. 7

you to be aware early on, that the development and any crossing of the Springbrook Arroyo should provide reasonable protection for the natural habitat and an undercrossing for the Regional Trail as well as habitat usage”.

City of Loma Linda: (Letter Jan. 24, 2002)

“This is to advise that the City Council at the regular meeting of Jan 22, unanimously supported your efforts and the Riverside County Service Area 126 Advisory Board’s recommendation to the Riverside County Transportation Commission to site a Metrolink station stop in Highgrove”.

San Bernardino Sun Newspaper: (Article Dec. 31, 2006)

“San Bernardino County Supervisor Dennis Hasnsberger believes there is enough demand for a Metrolink station in the Highgrove area. “It’s a very worthwhile objective”, Hansberger said. “Unfortunately, the people in Riverside County who have jurisdiction have not shown a lot of interest. But we are willing to try to get that discussion going”.

City of Grand Terrace Resolution: (Passed unanimously Dec. 13, 2001) *“NOW, THEREFORE, BE IT RESOLVED that the City Council of the City of Grand Terrace, does hereby recommend that the Riverside County Transportation Commission grant a Metrolink Station stop at Highgrove when planning for future track upgrading for Metrolink service on the San Jacinto Industrial Spur”.*

(Eight years later)

City of Grand Terrace: (Letter Dec. 29, 2009)

“The City of Grand Terrace continues to believe that a Metrolink stop in Highgrove would benefit the city and its residents”.

Tony Petta, First Mayor of Grand Terrace 1978: (Letter June 23, 2006)

“I encourage you and your staff to seriously consider building a Metrolink Station in Highgrove”.

Tony Petta, Retired Grand Terrace Mayor: (Public comments Dec. 11, 2009)

“It’s absolutely favorable to our community”

Hugh J. Grant: Former Chairman San Bernardino L. A. F. C. O., Former S. A. N. B. A. G. and Omnitrans Boards: (Letter June 21, 2006)

“I have become aware of the important need to situate a Metrolink stop in our neighboring community of Highgrove, in Riverside County. Due to the fact that the nearest stops at this time are in San Bernardino and Riverside, servicing the transportation needs for the large population in between, with valid predictions of sizable increases in the near future, seem to me to be self-evident”.

Southern California Association of Governments (S. C. A. G.): (Aug. 30, 2007)

“In the latest State of the Region Report, Southern California received an “F” for transportation mobility. The region has been the most congested in the country for the past two decades”.

JoAnn Johnson, Manager Grand Terrace Senior Center (Letter Feb. 23, 2009)

“I strongly support a Metrolink Station in Highgrove and I know that many others in Grand Terrace do also”.

William A. Shopoff, The Shopoff

Group: (letter Feb. 23, 2009)

“Since Highgrove is a natural rail-road junction point where two rail-road lines meet between Riverside and San Bernardino, a commuter train stop in Highgrove would benefit the entire region. This location is only ½ mile east of the congested I-215 Freeway that has exits at Center Street. It is also only about one mile northeast of the new \$381 million dollar 60/91/215 interchange that was just completed, and about 3 miles south of the I-215/I-10 interchange. Both major interchanges are between Riverside and San Bernardino and the Highgrove location is also between Riverside and San Bernardino”.

Anthony Mize, Builder: (Letter Feb. 24, 2009)

“It is our opinion that the junction point of the Metrolink train traffic between the City of Riverside and the City of San Bernardino and the Perris Valley Line is a very logical location for a new station. In this day of “NIMBY” on just about everything, it would seem to us that if a community wants to work together to revitalize itself by embracing something like this then RCTC should give it careful, thoughtful consideration”.

Kirk Wallace, Builder: (Letter Oct. 21, 2009)

“We feel this station would be very beneficial to the community not only because of the established residents but with the future development that will impact the area of Highgrove”.

Bobbie Kay Forbes, Terra Loma Real Estate: (Letter Feb. 25, 2009)

“As a local Realtor I believe the area would benefit having a Metrolink Station in Highgrove. There

are many people in our community that use the Metrolink a few times a week to get to LA for work. When I am showing property to people from out of the area they will ask about the location of Metrolink stations. And as more people in the area are financially stressed by the economy and the price of commuting they will be more encouraged to use Metrolink if it is closer to home”.

Byron Matteson 14 year Mayor of Grand Terrace: (Letter June 23, 2006)

“I think the commuter trains will gain even more popularity in the near future as our area continues to experience rapid growth and our freeway systems become more and more congested. Proper planning is essential in being able to handle these future transportation needs and I hope the new Highgrove Station will be approved soon, to help alleviate some of these ongoing traffic problems”.

Highgrove CSA 126 Resolution: (Nov. 27, 2001)

“Highgrove community adopted a 15 point resolution outlining the benefits of a Metrolink station stop in Highgrove”.

Highgrove Project Area Committee: (Petition Jan. 8, 2002)

“The Project Area Committee (P. A. C.), for the redevelopment of the Highgrove area, hereby submits this recommendation that a Metrolink Station stop be implemented at Highgrove when the tracks are upgraded for commuter service on the San Jacinto Branch”

Robert and Nancy Rice, retired Highgrove residents: (Letter Feb. 20, 2009)

“We are in our Seventies, and don’t

Free Tax Preparation Services

Provided by Community Action Partnership of Riverside County
Free Tax Preparation for individuals or families that earned under \$52,000 in 2013
 Every Friday during the month of February and March from 12:00pm-4:00pm
 Every Saturday during the month of February and March from 10:00am-2:00pm
Starting on Saturday February 1, 2014 10:00am-2:00pm
 Free Tax Preparation Services will be available at the
 Highgrove Library 530 W Center St. Highgrove, CA 92507
 For more information please call 951-682-1507



La Pasta Italia

DELI • MARKET • PASTA FACTORY

**Order your Lasagna and party trays early
for your Holiday Parties!**

909~783~6835

www.lapastaitalia.com

22320 Barton Rd, Suite C, Grand Terrace, CA 92313

Bauman's Tow Service, Inc.

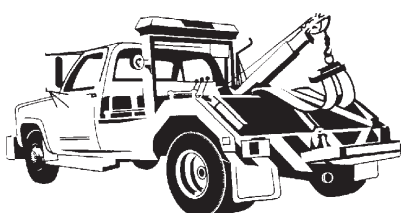
Family Owned, Serving Since 1907

Ronnie & Gary Bauman

951-683-8060

FAX 951-369-3932

1944 Spruce St.
Riverside, CA 92507



Bluebird Quilts & GALLERY

“Tweet” “Tweet” “Tweet”

Come See our New Display of
Fabrics for all occasions

(909) 514 - 0333

•Sun. Noon-5:00pm • Mon.-Thur. 10am-6pm
•Fri. 10am-3pm • Sat. Closed

22320 Barton Rd., Grand Terrace
(Corner of Barton & Canal)

- Fabric
- Classes
- Custom
- Traditional
- Quilt Supplies

HIGHGROVE HAPPENINGS

Additional Quotes:

Cont. from P. 10

like to drive very far. With a station near home, we could go, go, go, and not have to worry about traffic".

George Saunders, commuter from Grand Terrace to Orange County for 7 years: (Letter Feb. 20, 2009).

"With the ever expanding usage of the train it has become increasingly difficult to get to, and to find parking at Downtown Riverside station. An additional stop on the route between Riverside and San Bernardino would be helpful".

William H. Addington, Civil Engineer since 1975-Retired: (Public comments Dec. 11, 2009)

"It is really important to Grand Terrace, Loma Linda and Highgrove to have a station. The opportunity is there now and if passed by, it won't be available. The site is well located and the problems could be mitigated with good engineering. This is the time to act!"

Editor's note: These, and other comments have been ignored by RCTC staff for the last 12 years!

A station in search of a location!

RCTC has insisted on building a Metrolink station between Highgrove and UCR for several years but the location has changed several times.

PALMYRITA AVE.:

On Jan. 25, 2010 I took a volunteer with me, with 54 year's experience as a Civil Engineer, and we presented an alternative to the Palmyrita location to RCTC by showing them that the station could be built at Highgrove. But the two of us were outnumbered 10 to one because there were 20 representatives from RCTC at this meeting. For several years RCTC planned on building a Metrolink station on the S/E corner of Palmyrita Ave. and on April 5, 2010 several Libraries (except the Highgrove library), received copies of the EIR. After I complained, the Highgrove Library got a copy of the EIR but the EIR showed a parking lot next to the Perris Valley Line track on the S/E corner at Palmyrita Ave. But was this diagram really correct? On Jan. 12, 2011, I showed the Commissioners a photo of a brand new

507,000 sq. ft. warehouse that had been built on the same exact location where they planned on building a Metrolink station. I am sure they were embarrassed but libraries in Riverside, Moreno Valley, Woodcrest, Perris and the RCTC office were already distributing this information about the Palmyrita site.

A photo of this warehouse can be seen by going to: www.highgrovehappenings.net latest issue (Feb. 2011). Another location was needed because Palmyrita Ave. was unavailable due to this large warehouse.

COLUMBIA AVE.:

The next location at Columbia Ave. was abandoned because the giant Dole warehouse covered 25 acres and also made Columbia Ave. unavailable

UCR:

A station was considered at UCR but everyone knows that the residents did not want a station at UCR and there were many other issues involving insufficient space for a station. Even a "Kiss and Ride" station was abandoned that would not have require a parking lot at UCR.

SPRUCE AND RUSTIN:

Another location was considered at Spruce and Rustin.

RCTC wanted to make a curved track and connect to the UP track to take trains into Riverside from Perris. But this idea was also abandoned because an existing warehouse on Rustin would have to be demolished to make room for the curved track to connect to the Riverside line, RCTC would have to buy the track from the Union Pacific RR, and they would also have to extend this dead end track from 3rd St. to 10th St. to connect to the Riverside station.

The Federal Transit Administration

responded that this would be too costly when it was only \$168 million and RCTC finally realized that going to Highgrove would be several million dollars cheaper. I have a copy of the Federal Transit Administration letter dated Dec. 13, 2007.

But even after coming to Highgrove where it was less expensive, RCTC now admits that the cost is now \$248.3 million for the Perris Valley Line. The Federal Transit Administration's "Small Starts" program means there is a \$250 million dollar limit for the entire costs of the Perris Valley Line project. Saving over \$19 million by building the station at Highgrove instead of Marlborough Ave. would have helped RCTC to stay under this \$250,000,000.00 limit.

HIGHGROVE:

RCTC has opposed a station at Highgrove for 12 years where they own property right next to the daily commuter trains that go between Riverside and San Bernardino counties.

In spite of cost, public support, efficiency, and transportation between counties using the existing commuter trains, RCTC still refuses to build a station at Highgrove!

MARLBOROUGH AVE.:

Since RCTC insists on building a station in the Hunter Park area there was only one location left (except for Highgrove) and that was Marlborough Avenue. An article in our Dec. 2012 issue titled: "Comparing Metrolink Station choice" showed pictures of RCTC's Marlborough Ave. station that is on a dead end street where the other 3 corners have no room for expansion.

RCTC should fill and level Marlborough, sell the property, and build the station at Highgrove.

See map on:

www.highgrovehappenings.net

Phil's Philosophy

by Phil Turner

Accountability, Leadership, and the press!

We are in an era when Accountability, leadership and our press have failed us. We notice it across the board, across the nation, at every level of government and in the printed press.

Nationally, we see two camps covering the same news with such bias, that an event is all but unrecognizable from one to the other. On the right we have talk radio and Fox News, while on the left we have network news and most every newspaper. Events that are important to conservatives are given little attention or completely ignored by media on the left. The same is true with media attention on the right. Gone are the days when reporters left their biases at home when reporting the news.

Today a clear majority of Americans oppose the legalization of marijuana, gay marriage, and illegal immigration. But now a loud minority trumps a larger silent majority that is fueled by the press and politicians who cater to whatever Hollywood or their financial contributors want, and the small minority groups are made to look like a million man march.

The public has gone to the polls to oppose gay marriage and illegal immigration but the will of the people is subverted by an appointed judge

who would have never made it as a legitimate lawyer.

Public comments, recommendations, and efforts to make sense of the location selected by the Riverside County Transportation Commission is a good example of leaders not being held accountable for making decisions regarding the logical placement of a new Metrolink station in the area.

We have been let down by this local transportation agency that has been entrusted to spend our Federal and State tax money that was approved for transportation funds. Apparently there is no accountability to show how these tax dollars are being spent because public input and logic are not part of the equation.

A transportation agency's "special interest" should be providing cost effective and efficient transportation. The only conclusion I can reach after many years of evidence is that someone has their own agenda and will benefit by insisting on building a station at the Marlborough Avenue location. And what is the real reason why the Riverside paper refuses to cover this important story? That may be a story in its self!

Editor's note: The opinions expressed in this article are the viewpoints of its author and do not necessarily reflect the viewpoints of the "Highgrove Happenings"

AXIOM
PEST SERVICES
RESIDENTIAL • COMMERCIAL
AGRICULTURAL • INDUSTRIAL
ANTS • APHIDS • BEES • COCKROACHES
CRICKETS • EARWIGS • FLEAS • FLIES
HORNETS • MICE • RATS • SILVERFISH
SPIDERS • TICKS • WASPS
SLUGS • SNAILS • BIRD & PIGEON CONTROL
DEODORIZATION • GOPHERS • MOLES
GROUND SQUIRRELS • LAWN FERTILIZATION
TREE SPRAYING • VOLES • WEED CONTROL
SKUNK • RACCOON & O'POSSUM TRAPPING
ALL HOUSEHOLD PESTS
Serving the Inland Empire Since 1988
Family Owned and Operated
FREE ESTIMATES License #8314
1-800-599-0101
Cell Direct: 909-659-8711

HIGHGROVE HAPPENINGS

NEW Affordable Workforce Family Housing
INTEREST LIST NOW FORMING!



Highgrove Blossom APARTMENTS

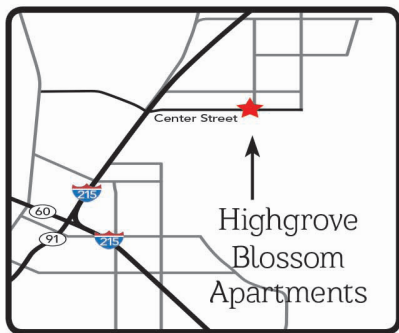


Call Today!

951-328-7968 or toll free 855-378-2190

550 W. CENTER STREET, RIVERSIDE, CA 92507

- SPARKLING POOL & SPA
- RESIDENT ACTIVITIES
- LAUNDRY CARE CENTERS
- COMMUNITY ROOM
- ENERGY STAR APPLIANCES INCLUDED



WORKFORCE
HOMEBUILDERS LLC



The walls are going up and the Highgrove Blossom Apartments are taking shape. The building in the far distance is the Highgrove Library.

Eagles Aerie #997 hosts event
to support Veterans with PTSD

FUELED BY THE FALLEN



Five new Chevrolet Camaros came to the Eagles aerie # 997 on Feb. 23, 2014. Shown standing in front of them is former Secretary of the Army Mr. Martin Hoffman. Each Camaro was a tribute to those fallen during the 9/11 attack.

On Feb. 23, 2014 the 1st Annual Rose of Love Bikers Run started at the Riverside Harley Davidson, went to the Riverside National Cemetery for a dedication for our Veterans and then went to the Riverside Eagles Aerie # 997 in Highgrove for good food and entertainment that included 3 live bands and Karaoke in the evening. PTSD is Post Traumatic Stress Disorder and TBI is Traumatic Brain Injury and this event was held to increase the healing efforts for our Vietnam Veterans and their families, and to help erect the Vietnam Memorial in the Riverside National Cemetery.

Cars representing Flight Victims, First Responders, World Trade Towers, Pentagon and Fallen Heroes had victim's names painted on each car.



New 2 You

A Family Consignment Shop
Antiques, Clothes, Collectibles,
Furniture, Tools, Toys, Books

909-824-0220

22400 Barton Rd. Suite 3 Grand Terrace,

20% OFF
Your Shopping
with items
donated!

TRI-CITY

SELF STORAGE
WWW.tricityselfstorage.com
485 W. La Cadena Dr. Riverside, CA 92501

951-784-0102

SWAP!
CALL TODAY!!

TRADE!

SAVE!

JOIN US FOR OUR MONTHLY
COMMUNITY SALE!! 3/16/14 & 3/17/14



STORAGE SPECIALS
LOW MONTHLY RATES, MULTI UNIT DISCOUNTS, ADVANCE PAYMENT
DISCOUNT, ON SITE SHREDDING, MONTHLY YARD SALES, COMMERCIAL
DELIVERIES ACCEPTED, FREE E WASTE DISPOSAL, SALVATION ARMY DROP-SITE,
WIDE AISLES FOR EASY ACCESS, DRIVE UP /CROWD IN LEVEL

FREE ADMISSION!!

CALL TODAY AND
SECURE YOUR SPACE!
IN LIGHT OF OUR
ECONOMY
SPACES ARE AVAILABLE
AT \$15.00
FOR THE WEEKEND!
SO TELL YOUR FRIENDS,
TELL YOUR
NEIGHBORS,
TELL YOUR CO-
WORKERS

- SELL YOUR USED/NEW
HOUSEHOLD ITEMS,
CLOTHES, TOYS,
BOOKS,
ELECTRONICS, AUTO
PARTS, ETC.
- SELL YOUR
HANDCRAFTED
GOODS!
- PROMOTE YOUR
BUSINESS!

SAVE!!

YARD
SALE



HIGHGROVE HAPPENINGS

California Dreaming

by Dr. Cynthia Williams

Being a transplanted native Californian I am suffering from shock just like my plants. I miss Highgrove and all my family and friends! I moved to central Oregon three years ago and it is nothing like Highgrove. I knew the change would be dramatic- this little city has about 80,000 people, hundreds, if not thousands, of wild deer, and more dogs per capita than any place I've ever been. It is another planet compared to California. Let me share with you my journey.

Even though it's the first of March with spring a few weeks away, here in central Oregon we are in the middle of winter. It won't warm up decently until Memorial Day and I can't plan on starting my garden until after the first of June. It seems my growing season is about 45 minutes long. If I have to work overtime that day I'll miss it!

We had quite a bit of snow last month; the nearly two feet pretty much buried us, shut down the city and ground everything to a halt. Businesses, libraries, churches and schools were all closed for a couple of days. It took a few days to dig out and then the weather warmed up a bit and the rain came. It was warm enough to start melting the snow and by the next weekend it was mostly gone. I don't mind the rain; you don't have to shovel rain!

In the middle of winter everything looks pretty dreary. The trees and bushes are bare; there are no flowers or green plants. We are treated to our own Currier and Ives painting after a heavy snow fall. The tree branches are drooping from being loaded with fluffy puffs of snow; the bare bushes are coated with shiny white snow giving them some much needed texture, camouflaging the drab beige and brown of the barren trees and shrubs.

As I drive by Baker Pond I see little fuzzy deities walking on water; ducks and geese light as a feather, on top of the frozen pond. The ducks and geese seem to stay year-round. They don't fly south for the winter,

seeming to want to hang out with the tourists who come here for the winter sports. The geese fly overhead in their aerodynamic V-formation, one of them honking and honking, as if he is the coxswain on a rowing crew, pushing the others to keep up and go faster.

When the snow is heavy in the higher elevations the deer come back into town to nibble on whatever green is peeking through the ice and. My daughter has a bird feeder filled with seeds; I look out the window and watch the deer poke their tongues in it trying to grab some of the seeds. I like to hand-feed them carrots and apples; these deer are used to human contact as they stick to the same neighborhood year after year. I can see the babies from spring coming back and see how much they've grown during the year.

My dear aunt Ann Margaret Guinn Williams, 90, passed away in January from complications of Parkinson's disease. She was the loveliest of women, always cheerful and smiling with a quick wit and brilliant sense of humor paired with a gentle elegance and timeless beauty that never faded. She was incredibly happily married, being devoted to my uncle Howard for 68 years. They were deeply in love to the very end. Eleven years ago, in his annual holiday year-end letter, Howie shared his thoughts about Ann in a most affectionate way. It moved me to tears then as it does now...

"She's almost 80. I follow her to the garage, enchanted. I watch that curvy thing in tight tan slacks, low heels click-clicking, a fashion plate in a sweater by Nordie. Wavy light brown hair is natural. She's slender, more than in her UT (University of Tennessee) coed days. A model on a runway...

"Reality tries to emerge. Maybe she's not exactly the girl in Glamour Magazine in 1950. There must be wrinkles, but I can't see them. Gray eases down from the top, not seriously. Digital hearing aids, when she wears them, are out of sight under

hair to her shoulders. She warned me, 'When I get electronic ears, you'll never have a private thought again.' That's Miss Perky. Fifty-seven years of neon in my life. Make that 68 years. I wrote, maybe stole, this 10 years ago: Oh my love, I'd crawl a mile to see your smile."

My uncle told me "It was quick and

easy to write. She made me think love and say it many ways. But it was hard to watch that car turn the corner and go out of sight."

Such a lovely tribute to a lovely woman from a very loving man. There is no better way to be remembered- forever loved and cherished.



Highgrove Nightmare!



The Riverside County Economic Development Agency improved the N/E corner of Center St. and Iowa Ave. with their facade program a few years ago and made this corner very attractive with new wrought iron fencing, paint and a new "Fix it Right" sign but this corner has now become a junk yard! Fix it Right is out of business and this parking lot is now filled with junk cars that need heavy repairs that can be seen near the entrance to our community and Riverside County Code Enforcement has already been to this location!

March 2014 • Page 13



MONDAY SPECIAL

25% off

entire check for local residents

Purchase of at least one beverage required.
Not valid with any other coupon.

Hours:
Monday: 7am - 8pm
Tues - Sat: 7am - 9pm
Sunday: 8am - 4pm

22400 Barton Rd. Suite 1
Grand Terrace, CA 92313 **909-783-3106**

HIGHGROVE HAPPENINGS

WORD SEARCH

V B X S H H D K L K Z D V D U
E R B T C I T N N H E L M E T
M V N A C H O S U K U E G D H
D M O E S U L D R M X I U A H
J C C L R E H C T I P F D O W
V V U C G R B P P I F I M L C
H W D N E D C A T C H E R S Q
L N A N O D X R L Y P E O E Q
H L I L O M C E L L M M S S E
S I B A K C K N A V N R G A V
F Q F P T I E T B I P O D B B
N I A P R P E S L P D F Z T A
G L N T J S A E U T H I R D A
S O S E P O P C O R N N S Z W
X R U U N X B H F D E U F Q H

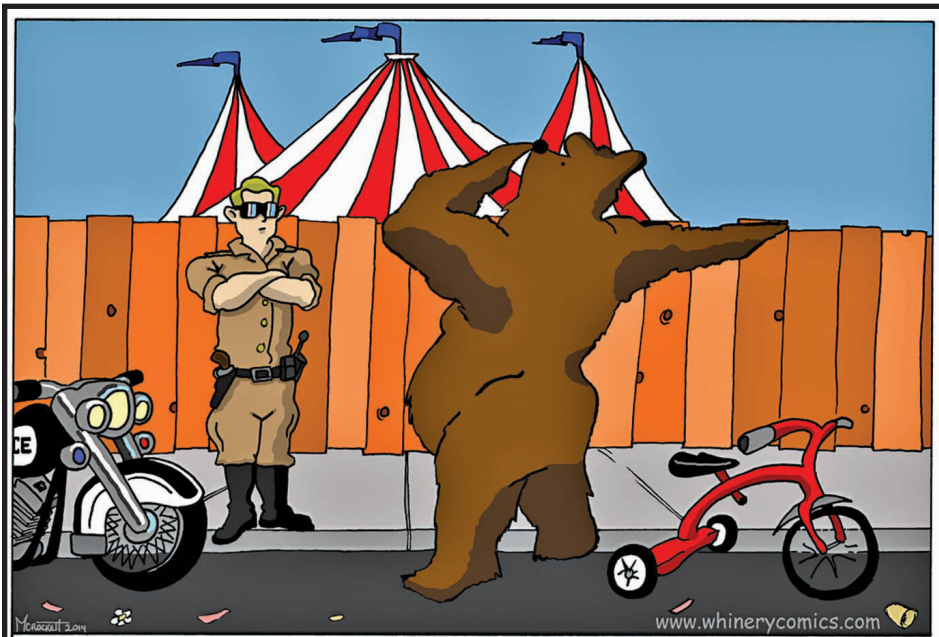
ANGELS	FIELD	PITCHER
BASEBALL	FIRST	PLATE
BASE HIT	FOUL	POPCORN
BASES LOADED	FOUL BALL	RUN
CAP	GLOVE	SECOND
CAPTAIN	HELMET	STRIKE
CATCHER	HOME PLATE	THIRD
CLEATS	HOTDOGS	UMPIRE
COACH	NACHOS	UNIFORM
FANS	PARENTS	WALK

The first child 12 or under to turn in the correct answer to the above puzzle will win a prize and get their picture in next month's paper. (You can only win once) Take or fax your completed puzzle to the Norton Younglove Community Center 459 Center Street (951-779-3099 fax) during their regular business hours. Good Luck!

NAME: _____
AGE: _____
PHONE: _____
PARENTS: _____
CITY: _____
SCHOOL: _____
GRADE: _____
TEACHER: _____
EMAIL: _____

THE WINNER THIS MONTH!

Maria Ramirez age 8 won the word search puzzle this past month. Congratulations! She is the daughter of David Ramirez. She attends Highgrove Elementary and is in the 3rd grade, her teacher is Miss Dunn.



cartoon by M. Crockett (www.whinerycomics.com)

Advertising rates

The "Highgrove Happenings" advertising rates are the lowest rates in town. If you have already trained your dog to bring in the paper (like the one on the right) you can be assured that he won't be lifting anything too heavy by bringing in our little newspaper. Some of the other larger newspapers are wasting just too many trees, especially in their Sunday edition. No one should ever ask their dog to lift something that heavy! Our little paper may not have much news in it, but we take pride in providing you with something free that you can put in the bottom of your birdcage! Give us a call (951) 683 4994 or check out our web site for the pricing and sizes of our ads or go to <http://www.highgrovehappenings.net> and click on the contact page.

Call us !

We have no reporters so we are asking for your help. You can be a reporter by just giving us a call or sending us an E-mail or a picture. Small town news is what we are all about and we want to encourage you to participate. We try to print positive things since there is so much bad news on TV and in other newspapers. Send us a story, take a picture or call us about something that is happening in Highgrove. (951) 683 4994



Please visit our Highgrove Happenings website:

www.highgrovehappenings.net

Keep in touch: Send us your e-mail addresses to help us keep you informed of activities and projects that effect our community. Send your address to:

highgrovenews@roadrunner.com

Highgrove T-shirt prices reduced! (See P.3)

Notice: We have some Highgrove T-shirts in various sizes that have just been printed. They have the Highgrove logo on the front and a picture of a 1916 "Highgrove Brand" orange crate label showing Sugarloaf with an orange grove at it's base. It states: Grown and Packed in Highgrove by Sugarloaf Orange Growers Assn., Highgrove. Call (951) 683 4994

The Pets Place
Animal Hospital

Boarding • Grooming • Training

Dr. Boshoven, DVM & Dr. Hodgson DVM

625 W. La Cadena Drive Riverside, CA 92501

www.thepetsplaceanimalhospital.com

(951)
684-2181

House Calls Too!!

ACURA
HONDA
LEXUS
NISSAN
INFINITY

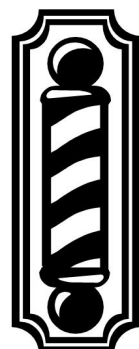
TOY TECH

Auto Repair
Specializing In Toyota

(951)781-7633

983 Center St.
Highgrove, CA 92507

JAMES JAURIGUE
Certified Master Technician



MY BARBER SHOP

Where men walk in and gentlemen walk out!

All types of Haircuts:

- Fades
- Tapers
- Mohawks / Fohawks
- Flat Tops / Crew Cuts
- Razor Finish



982 B Center Street ♦ Highgrove Ca 92507 ♦ (951) 341 - 5916

HIGHGROVE HAPPENINGS



HIGHGROVE CHURCHES



Immanuel Baptist Temple

45 Michigan Ave., Highgrove 951-784-1100

Pastor John Pettit

Sunday School: 10:00 am

Church Service: 11:00 am & 6:00 pm

Bible Study: 7:00 pm Wednesdays

Good News Missionary Baptist Church

Rev. Levonzo Gray, Sr. Pastor

Worship Service 11:30 am

Attention Boys & Girls

Do you need help with your homework?

Hope and Help Learning Center is the place

Tutoring classes are Mon. - Thur: 3:00pm - 6:00pm

For more information & location call: (951)683-2916

178 Iowa Ave. Highgrove, CA 92507

Open hearts

Open minds



Open Doors

HIGHGROVE UNITED METHODIST CHURCH

938 Center St., Highgrove, CA 92507



"We invite you . . . we expect you . . . we welcome you."

Sunday Worship: 10:30 am

Rev. Dr. Martin Niponi Finau

562-964-0734

revnfinau@yahoo.com

"This church has been serving the Highgrove community since 1890"

Christ the Redeemer Catholic Community

12745 Oriole Avenue at Pico Street, Grand Terrace, CA 92313

MASS SCHEDULE

Saturday Evening 5:00 PM

Weekly Mon-Fri 8:00 AM

Sunday 7:30 AM & 10:30 AM (English) and 9:00 AM: (Korean) 12PM: (Spanish)

E-mail: CRGT@URS2.NET

Jose Crespo: Pastoral associate

Parish Office 909-783-3811 fax 909-783-4689



The Refuge

BIBLE FELLOWSHIP

Sundays - 9:00am

New Location in Riverside!

1600 Chicago Ave, Suite R7

Those who live in the shelter of the Most High will find rest in the shadow of the Almighty. This I declare about the Lord: He alone is my refuge, my place of safety; He is my God, and I trust him. Psalm 91:1-2

(951) 680-0167

refugefellowship.org

info@refugefellowship.org



Sundays
9 & 11 am

Grand Terrace
High School
21810 Main Street

Children's Ministry
Youth Ministry
ccthebrook.org
909.424.0010



LIFE NOW. LIFE eternal. JOHN 10:10

I have come that they may have life, and that they may have it more abundantly.

Highgrove Library News

FREE Wireless Internet Access at

Highgrove Library

530 Center St., Highgrove, CA

951-682-1507



Highgrove Library is open on the following days, Tuesday 10:00 am to 6:00 pm, Wednesday 10:00 am to 6:00 pm, Thursday 10:00 am to 6:00 pm, Friday 12:00 pm to 6:00 pm, Saturday 10:00 am to 3:00 pm, and closed on Monday and Sunday. For more information please call 951-682-1507



sandalschurch
REAL WITH OURSELVES, GOD & OTHERS
SUNDAYS 9AM / 11AM / 5PM / 7PM

150 PALMYRA AVE
RIVERSIDE, CA, 92507
sandalschurch.com
facebook.com/sandalschurch
twitter.com/sandalschurch

Big & SMALL

"We Groom Em' All"



By Appt. Please

22400 Barton Rd, Ste. #5
Grand Terrace

Free flea bath
1 per customer
(good thru Feb. 2014)

909-783.2217



Riverside Eagles Aerie # 997

MARCH CALENDAR

466 E. La Cadena Dr. Highgrove, Ca.

(951) 683 7770

LIVE BANDS EVERY FRIDAY!

Friday March. 7, 2014- 7 pm to 11 pm Live Band: **Highway 18**

Friday March. 14, 2014- 7 pm to 11 pm Live Band: **Blue Diamond**

Friday March. 21, 2014- 7 pm to 11pm Live Band: **Yard Dogs**

Friday March. 28, 2014- 7 pm to 11pm Live Band : to be announced

Karaoke every Sunday night 5:30 pm to 9:30 pm

Come to the Eagles for good music!

\$1.00 Tacos every Monday night from 5:30 PM to 7:30 PM

We Rent Our Hall

DON'T FORGET THAT OUR HALL IS FOR RENT TO THE PUBLIC FOR ANY OCCASION .WE ENCOURAGE YOU TO CHECK IT OUT!
Members only but we encourage you to join our Eagles. For more information contact the number above.

HIGHGROVE HAPPENINGS

A BIG THANK YOU TO ALL OUR ADVERTISERS

Please Patronize Them: Without Their Support We Could Not Bring You The Local News

We're More Than Just Auto Parts

Think CARQUEST for high-quality fleet truck or heavy-duty equipment components and systems:

Green Stripe® Belts & Hose
PolarSeal™ Refrigerant hose/couplings
Air brake Hose Assemblies
Hydraulic System Products
And Much More



AUTO PARTS
belts & hose

Carquest Auto Parts
795 Columbia Ave.
Riverside, CA 92507
951-684-0242

Al Luna
Manager



Chris' Burgers

Craving Something New?
Come to Chris' Burgers!

Open

Mon.-Fri. 7am-8pm
Sat. 8:00am-8pm

NOW Sun: 9:30am-8pm

Serving Breakfast Specials,
Lunch Specials, and Family Packs
at a GREAT Price

(951) 781-8542

407 Iowa Ave., Highgrove, CA

RELIABLE TIRE CENTER

SINCE 1971

Mike Jimenez
Brian Jimenez

445 Iowa Ave.
Riverside, CA 92507

951-684-1132

reliabletirectr@aol.com

ZORBA'S RESTAURANT

Serving Highgrove
Since 1981
2 LOCATIONS TO SERVE YOU

OPEN 7 DAYS
Mon.-Sat. 7am. - 10- p.m.
Sun. 8 a.m. - 9 p.m.

1 450 Iowa Ave.,
Highgrove, CA • 951-686-5830

2 9961 Mission Blvd.,
Glen Avon, CA • 951-360-3977

Live Music
Every Saturday
5-9pm



Serving the community since 1965

Friday Night
All you can eat

Batter Dipped Cod
Lightly batter & fried to perfection

\$9.71

BREAKFAST

SPECIAL

Bacon or Sausage & Egg
Hash browns, Toast & Jelly

\$4.49

Served All Day

Beer & Wine available

2726 Iowa Ave.. Colton, CA (909) 825~0160

Any Purchase
\$20 or more
Get
\$4.00 off
With Coupon



Email:livearp1@gmail.com
Ranch Listings Needed!
Westcoe Realtors

LARGE OR SMALL EQUESTRIAN PROPERTY SPECIALIST & RESIDENTIAL

Riverside, San Bernardino &
Inland Empire's Representative for
Select Equestrian Properties.

Specializing in listing probate properties

Buying or Selling? Call

Livia (Wyatt) Earp

(951) 850-5508

See Ya Down The Trail!

DRE#00458563



Open 24 hrs

ATM Machine Available

(951) 682 9000



HIGHGROVE HAPPENINGS NEWSPAPER

"Dedicated to the improvement of our community through
awareness and involvement in local issues"

Publishers & Co-Editors

Ardie Barnett

R.A. "Barney" Barnett

Composition

Ardie Barnett

HOT LINES

For Articles
or Advertisements

Writers

R.A. "Barney" Barnett

Phil Turner

Dr. Cynthia Williams

Edward Jones



Call: (951) 683-4994

Cell: (951) 255-6645 (Ardie) or (951) 255-6648 (Barney)

Fax: (951) 683-7258 E-mail: highgrovenews@roadrunner.com

Web site: <http://www.highgrovehappenings.net>

FEEDBACK AND ARTICLES WANTED